

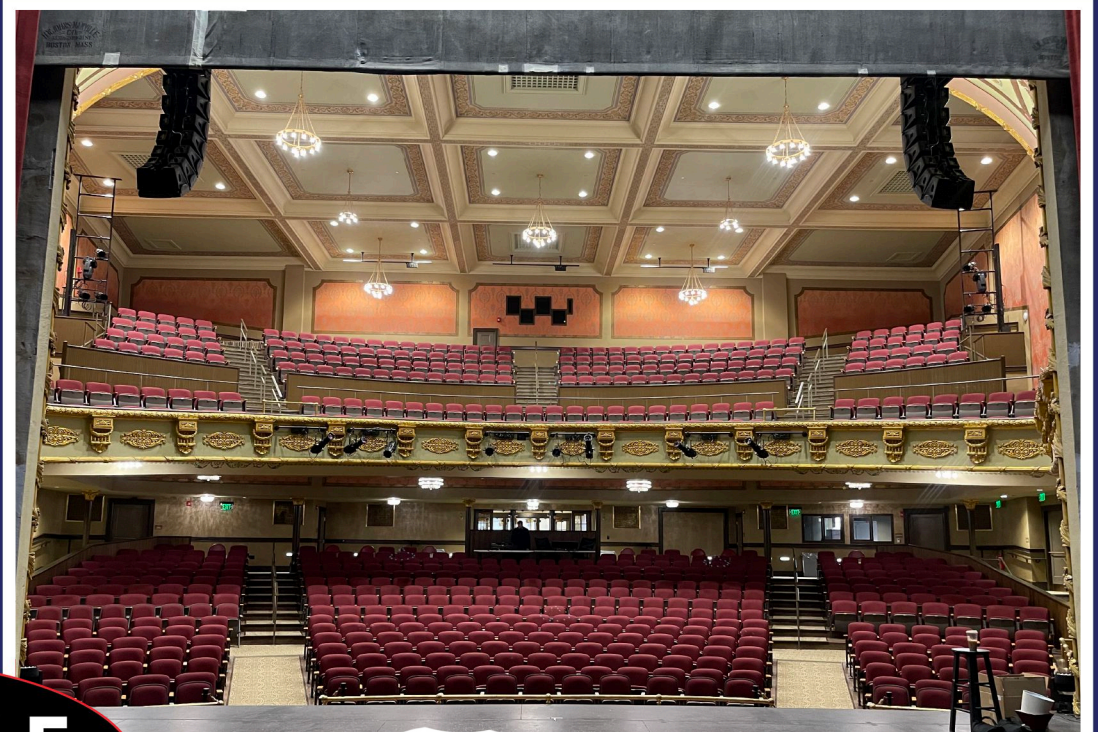
BOOKING • MARKETING • TICKETING
PROMOTING • PRODUCING • CONNECTING

SPECTACLE MANAGEMENT

PRESENTS

COLONIAL THEATRE

609 MAIN STREET, LACONIA, NH 03246



SPECTACLE
Live

VENUE & TECH PACK

UPDATED APRIL 2022

CONTACTS

ADAM TAYLOR

PRODUCTION

ATAYLOR@SPECTACLELIVE.COM

+1 (407) 529.4726

NICOLE SOUTHWORTH

HOSPITALITY, LOGISTICS & MERCH

NSOUTHWORTH@SPECTACLELIVE.COM

+1 (361) 230.0652

JAKE CRUMB

VENUE MANAGER

JCRUMB@SPECTACLELIVE.COM

ERIK RANEO

TALENT BUYER

ERANEO@SPECTACLELIVE.COM

ANDREW HOLDEN

TALENT BUYER

AHOLDEN@SPECTACLELIVE.COM

DAN BERUBE

MARKETING

DBERUBE@SPECTACLELIVE.COM

GENEVIEVE SHAPPELL

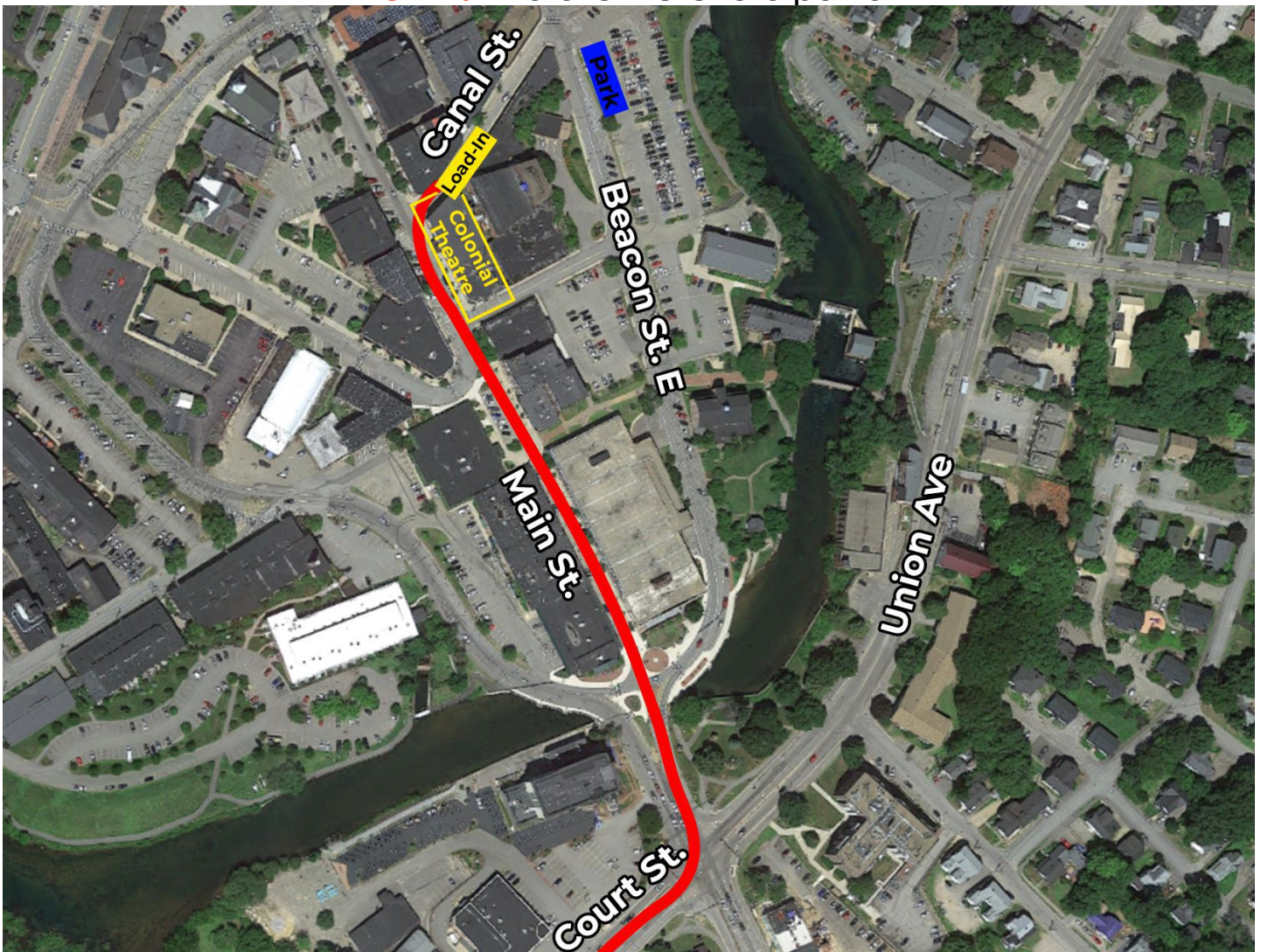
TICKETING

GSHAPPELL@SPECTACLELIVE.COM

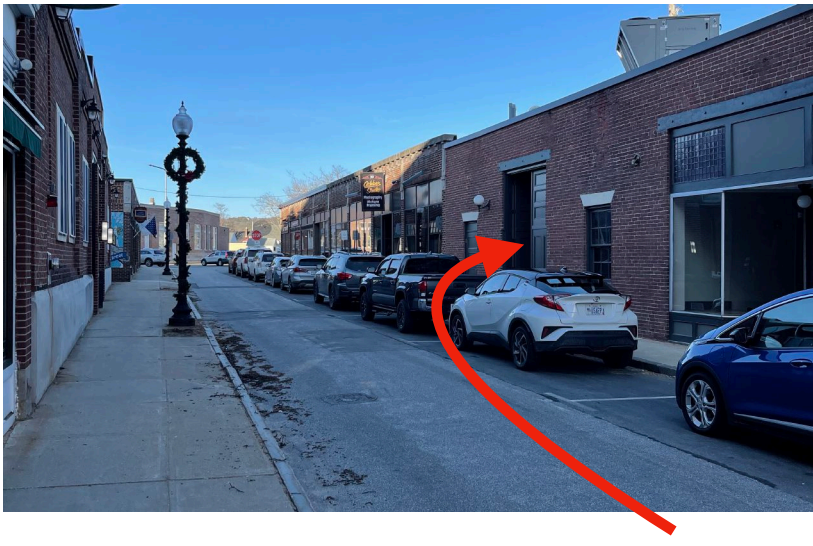
OVERVIEW

The Colonial Theatre is a Neocolonial style theatre with heavy Venetian influence, including an original hand painted fire curtain of the Venetian coast, opened in 1914. The freshly renovated venue re-opened in Spring of 2021. At a 750 seated capacity, the Colonial Theatre is a compact and intimate room, that will create a memorable night for both artist and patrons.

NOTE: There is NO shore power



LOAD IN

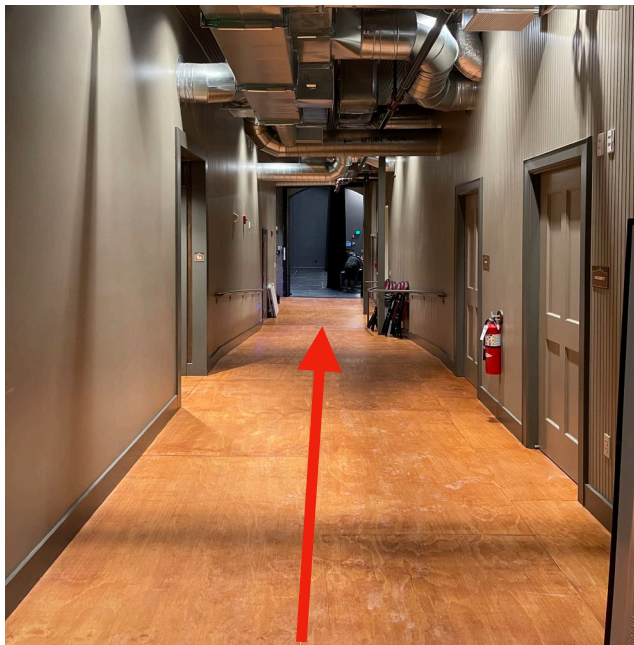


COLONIAL THEATRE

← Load in parking on Canal Street

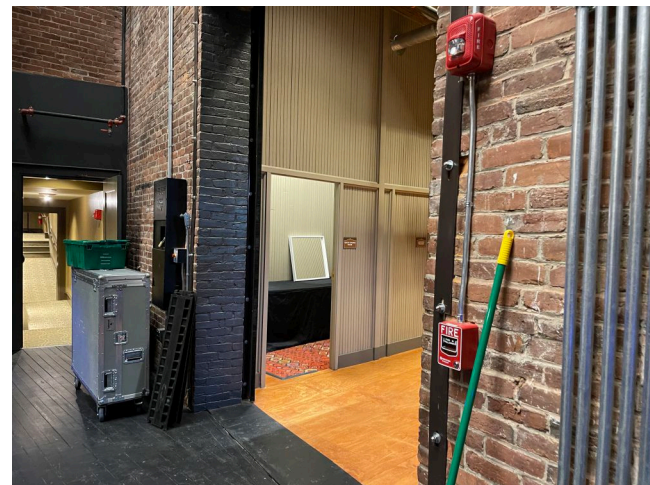


6" lift from sidewalk to load in level
Load in door - 8'w x 12' tall

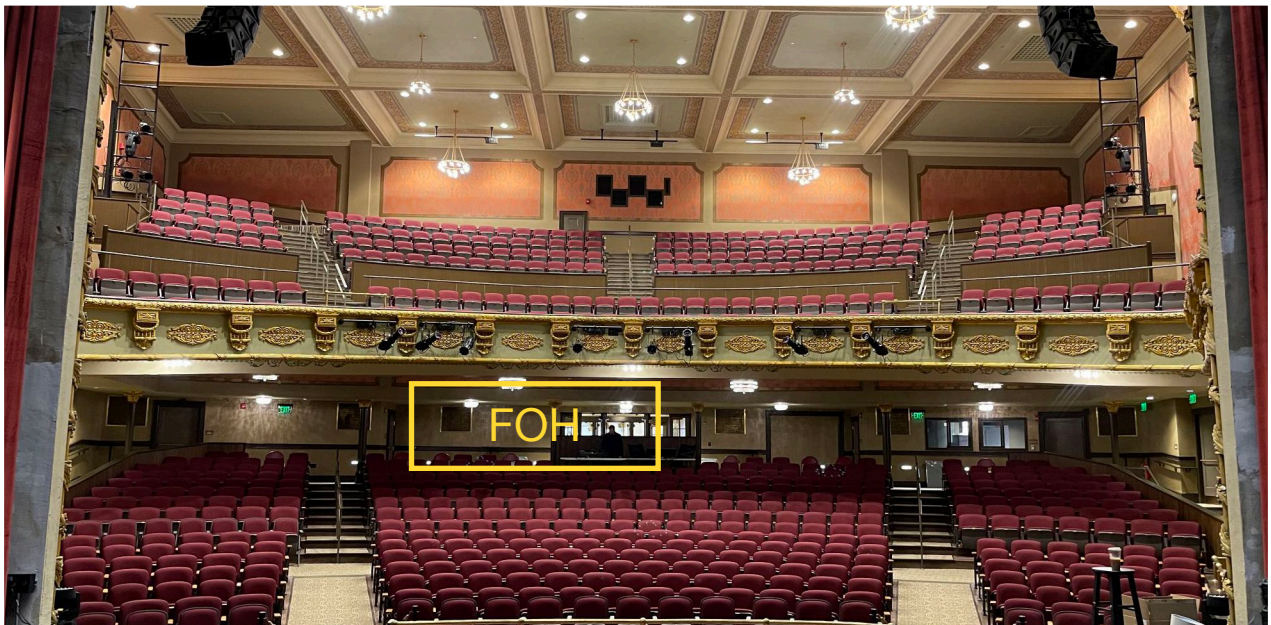
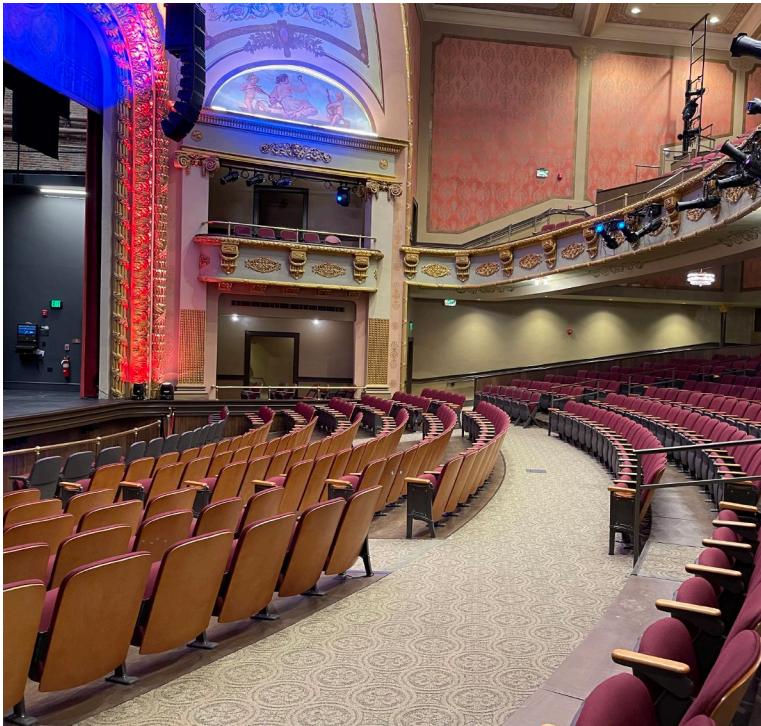
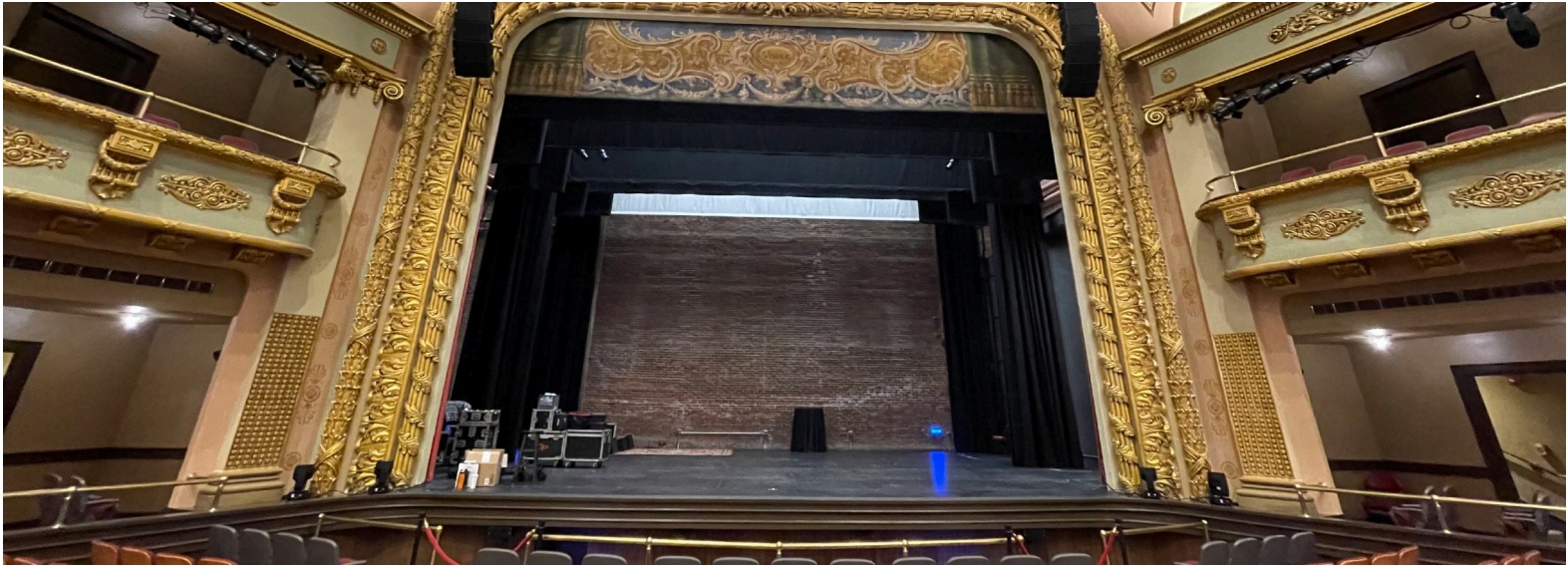


← 60' push directly to stage right

Roll up door at end of hall on stage right
Stage door -



STAGE



AUDIO

PA System

- (10) Nexo Geo M12 - 12 Degree
- (2) Nexo Geo M12 - 25 Degree
- (2) Nexo MSUB 15 (flown)
- (4) Nexo bumper for M10 and MSUB 15
- (2) Nexo MSub 18 Passive Single 18" Subwoofer on caster dolly
- Nexo ID24 front fills under stage lip and in each side box

Monitor System

- (8) D&B Max12 with D&B amplification

FOH / Monitors

Yamaha TF5 (monitors mixed from FOH)

Snake Systems

30 and 54 channel splitter systems available upon request
8, 12, and 16 channel subsnakes spec'd per show

Microphones

Several in-house microphones & DI's

Larger microphone packages brought in on a per show basis

POWER

Multiple circuits of 20amp quads affixed to the walls around stage

1x - 200 amp - 3 phase Cam Lok connection USR

1x - 60 amp - 3 phase Cam Lok connection SL

1x - 60 amp - 3 phase Cam Lok connection SR

LIGHTING

House Console

ETC Gio with two additional touch screen monitors
- using SACN over Cat5 to communicate with fixtures

House Fixtures

(40) ETC ColorSource Spot | P:01 / 5ch
(15) ETC ColorSource PAR | P:01 / 5ch
(8) ETC Selador Lustr Desire D60 | QS Direct General / 10ch
(15) Chauvet Rogue R2X Wash
(22) Chauvet Rogue R3 Spot

Positions

The 5 on-stage line sets are motorized with ETC control

ATMOSPHERICS

There is no in-house hazer

Haze **MUST** be advanced no later than 2 weeks prior to event date

FOH AREA

Shared audio / lighting space - roughly 7' deep x 15' wide

Analog and ethernet tie-lines to stage (no 5-pin DMX lines to stage)

SOFT GOODS

- Upstage black traveler
- Flyable white cyc placed just downstage of upstage black traveler
- Midstage traveler
- Multiple flyable legs midstage

Colonial Theater Laconia | Rep Plot 8/31/2021

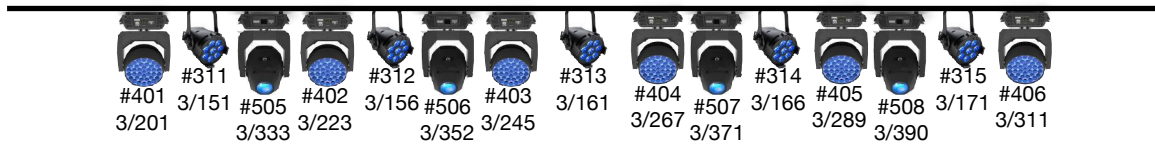
#351-358 | 4/1-80 (10ch each)

E5 | Node=U4



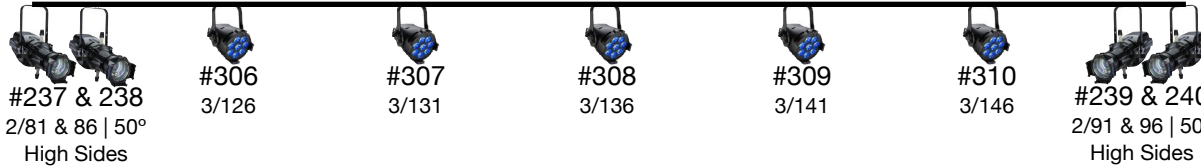
E5

E4 | Node=U3



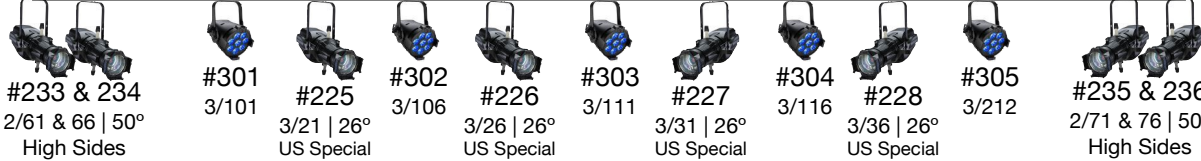
E4

E3 | Node=U3



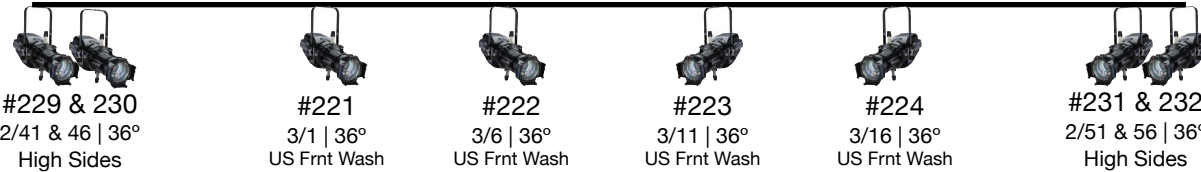
E3

E2 | Node=U3

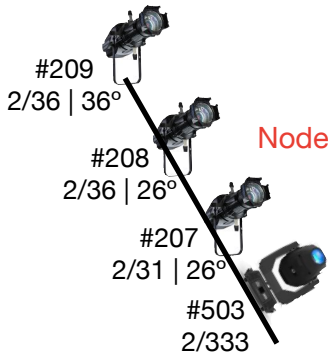


E2

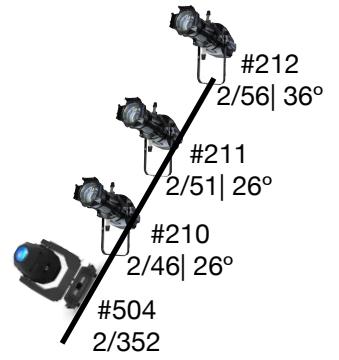
E1
Node=U3



E1

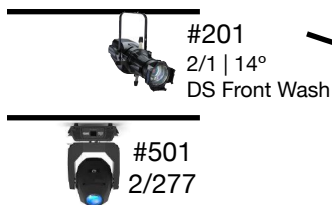
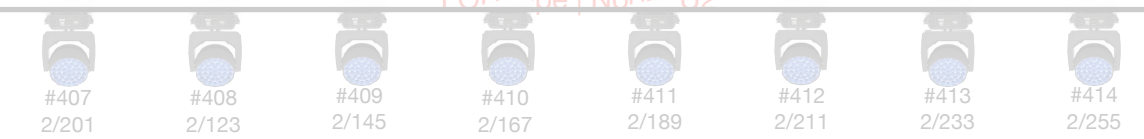


HL Box
Node=U2

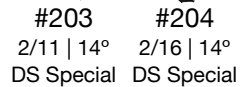


HR Box
Node=U2

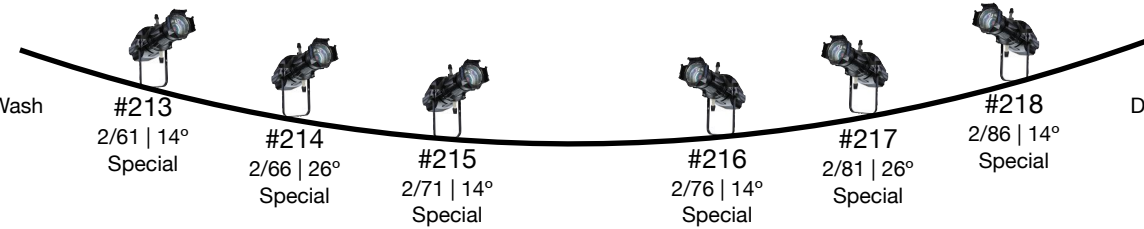
FOH Pipe | Node=U2



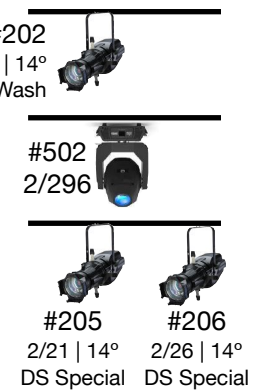
HL Ladder
Node=U2



Balcony Rail | Nodes=U2



HR Ladder
Node=U2



Fixture Key



ETC ColorSource Spot | P:01 / 5ch



ETC ColorSource PAR | P:01 / 5ch



ETC Selador Lustr Desire D60 | QS Direct General / 10ch



Chauvet Rogue R2X Wash



Chauvet Rogue R3 Spot

= Fixture Number as set in house console

x/xxx = Universe / Address

xx° = lens barrel installed, where noted

- House Console = ETC Gio (running EOS software, same as Element/Ion/Eos)

- Note that FOH pipe is greyed out, not yet installed

- Spare Fixtures (hanging on border #4 pipe):

9x Chauvet Rogue R2X Wash

2x ETC ColorSource Spot 2/50° lenses

14x Chauvet Rogue R3 Beam (profile not yet available, R2 Beam is close if needed)

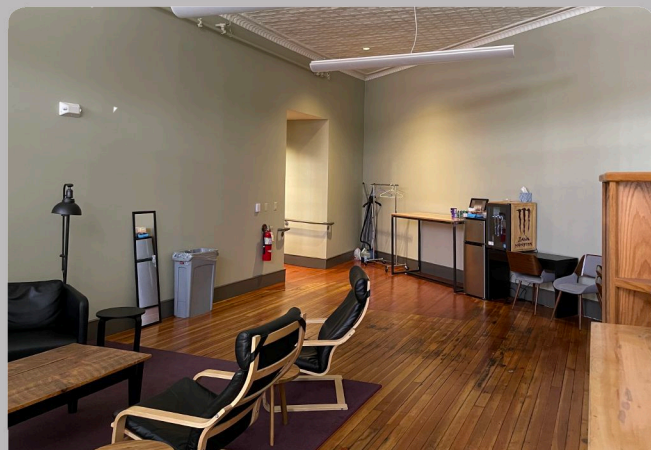
HOSPITALITY

The Colonial Theatre is equipped with a large communal Greenroom / Lounge area with an additional large catering room. These areas connect to a hallway leading to direct stage access. There are two (multi-stall) backstage restrooms, each with a shower.

Additionally, there is a small quick change room off stage right.



GREENROOM / LOUNGE



GREENROOM / LOUNGE



CATERING



QUICK CHANGE ROOM

WiFi Network: **CT-Guest**
Password: **Ct6578774**

Note: This venue does not have laundry facilities.