

BOOKING • MARKETING • TICKETING
PROMOTING • PRODUCING • CONNECTING

SPECTACLE MANAGEMENT

PRESENTS

PLYMOUTH MEMORIAL HALL

83 COURT STREET, PLYMOUTH, MA 02360



SPECTACLE
Live

VENUE & TECH PACK

UPDATED JANUARY 2024

CONTACTS

ADAM TAYLOR

PRODUCTION

ATAYLOR@SPECTACLELIVE.COM

+1 (407) 529.4726

JOHN PALMER

HOSPITALITY, LOGISTICS & MERCH

JPALMER@SPECTACLELIVE.COM

+1 (617) 320.7254

ERIK RANEO

TALENT BUYER

ERANEO@SPECTACLELIVE.COM

ANDREW HOLDEN

TALENT BUYER

AHOLDEN@SPECTACLELIVE.COM

DAN BERUBE

MARKETING

DBERUBE@SPECTACLELIVE.COM

GENEVIEVE SHAPPELL

TICKETING

GSHAPPELL@SPECTACLELIVE.COM

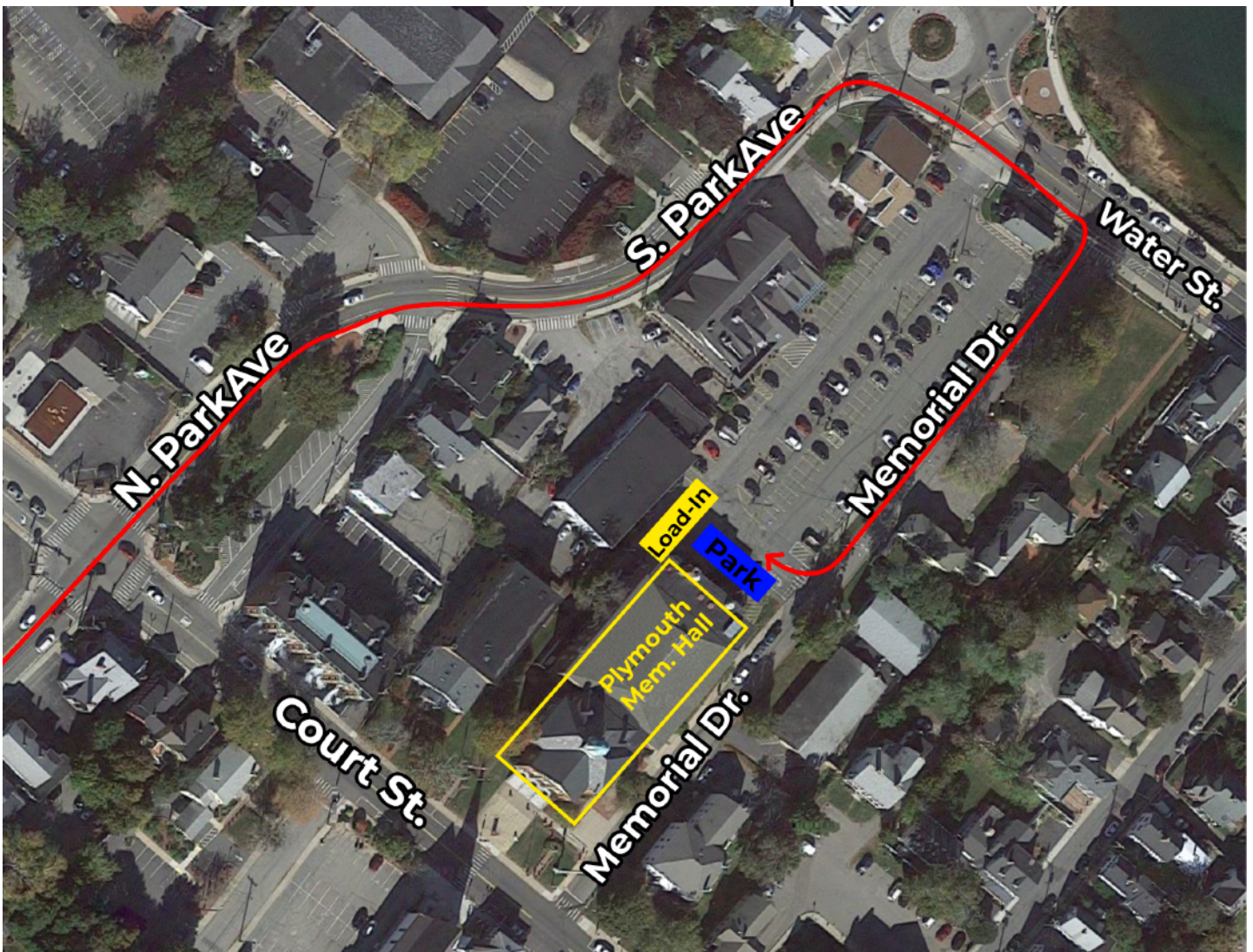
OVERVIEW

Plymouth Memorial Hall was erected in 1924 and dedicated in 1926 as a memorial to those from Plymouth who served in our military. In 2004, Memorial Hall underwent a \$7 million renovation to restore the space as well as add a few upgrades. With a maximum capacity of 1,302 seats, Plymouth Memorial Hall has seen many events in its many years of operation.

VENUE LOCATION

Plymouth Memorial Hall is located in the heart of historic downtown Plymouth and is within short walking distance to National landmarks such as Plymouth Rock and the Mayflower II.

NOTE: There is NO shore power



LOAD IN



PLYMOUTH MEMORIAL HALL

← Roughly 30' push into building.



20' push thru hallway to double doors that lead to House Left - audience Level. →



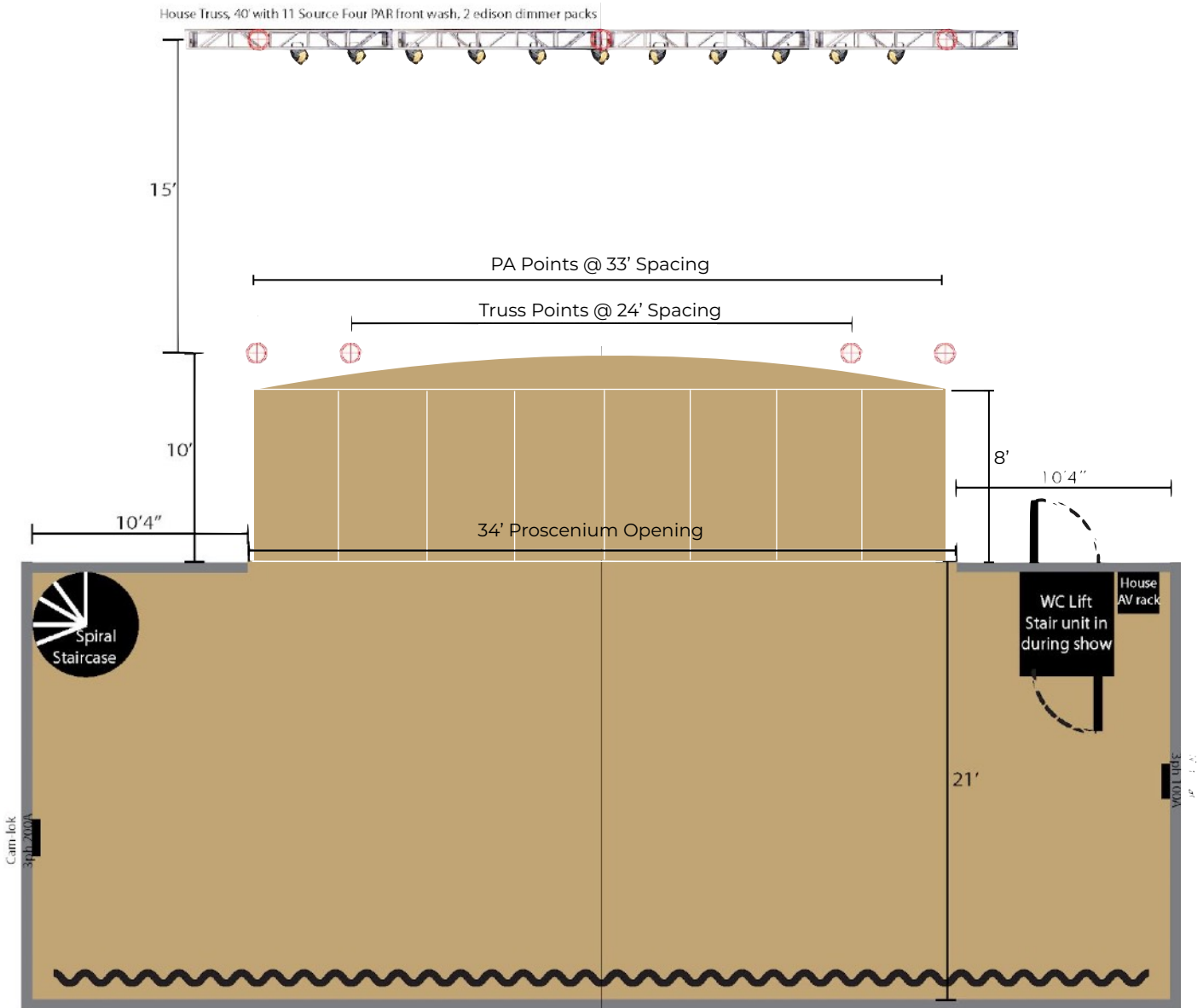
← 30' ramp up to 4' stage.

Stairs at end of hallway that lead to stage → right. This is artist entrance from green room.

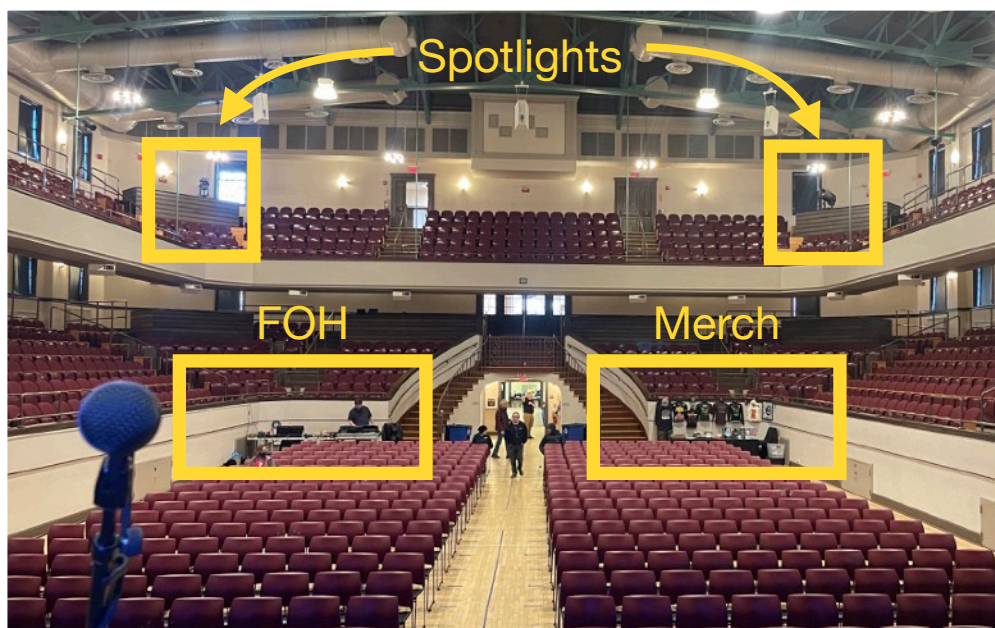
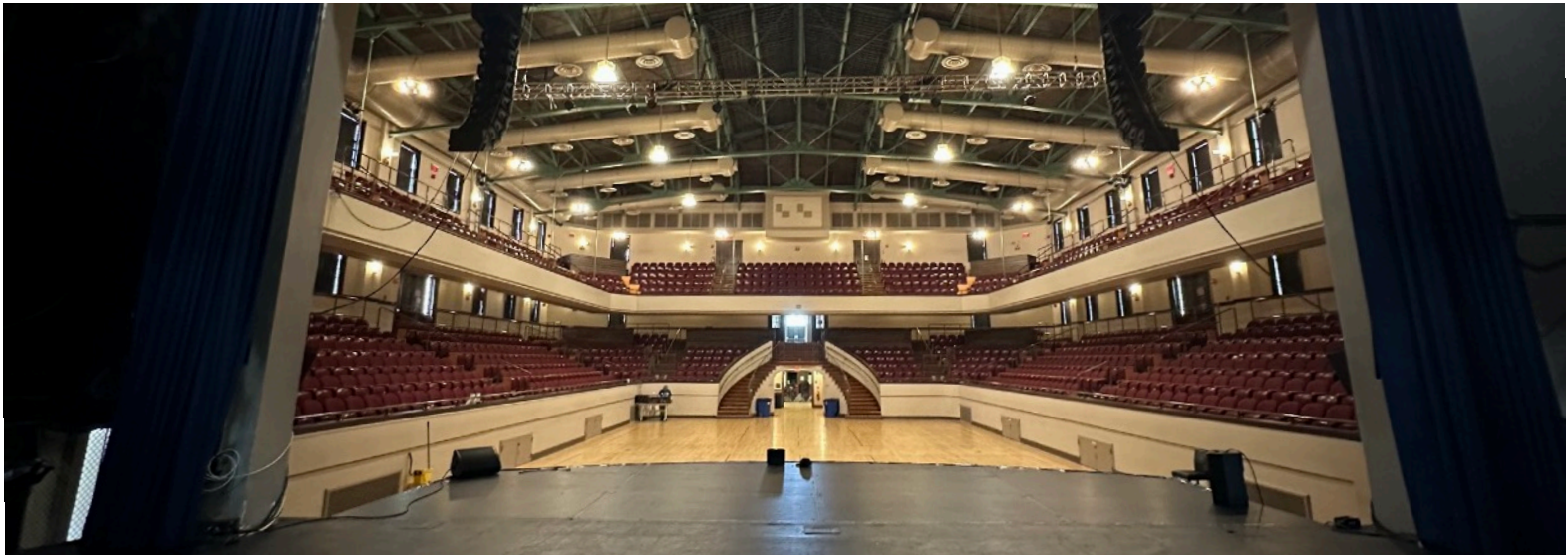


STAGE

The stage opening is 34' wide x 21' deep solid stage with a 8'-10' curved extension made from 4'x8' decks.
Dead cases live upstage of traveler or under stage extension



STAGE



AUDIO

PA System

Yamaha Nexo PA System

(18x) Geo M1012 - 9 per side

(4x) M-Sub15 - 2 flown per side

(4x) LS18 - on floor under or in front of stage

(6x) EPS8 - 2 used as front fills, 4 for balcony outfills

Monitor System

Use of venue (8x) Nexo P12 stage monitors

FOH / Monitors

Yamaha CL5 & QL5 w/ single Rio 32x16 Digital Snake

Others available upon request and subject to show expense

Snake Systems

30 and 54 channel splitter systems available upon request

8, 12, and 16 channel subsnakes spec'd per show

Microphones

Shure, Sennheiser, Audix, etc. mics available Whirlwind and Radial passive DIs

Radial and Countryman active DIs

Shure ULX D wireless systems

POWER

1x - 100 amp - 3 phase Mini Cam Lok connection SR

1x - 200 amp - 3 phase Cam Lok connection SL

Distros available with 5 - 20 (Edison), L5-30, L14-30, and L21-30

LIGHTING

House Console

Leprecon LP-612 (two-scene preset 12ch)

Other Console Options

Hog 3 PC with Fader and Programming Wings GrandMA PC with Fader and Programming Wings

House Fixtures

(11) ETC Parnel House Lights

Overheads, sconces along side walls (must remain on during show due to fire regulations)

No House Gel, please request in advance

Positions

FOH: 40' truss with 11 pannels, 2 dimmer packs

Focus Notes:

FOH truss is flown on 3 motors. No lift in house, focus is bounce or partial bounce to a ladder.

2x Spotlight Positions

Upper balcony corners in booths

(There are no in-house spotlights. Rental subject to show expense)

Moving fixtures, consoles, additional truss and ground support available on request during the show advance with Adam Taylor.

ATMOSPHERICS

There is **NO HAZE** or fog allowed in this venue.

HOSPITALITY

Plymouth Memorial Hall is equipped with a communal Greenroom / Lounge area. These areas connect to a long hallway leading to direct stage access. There are two individual showers along with one unisex bathroom.

Additionally, there is a small quick change room off stage right.



HOSPITALITY / CATERING



LOUNGE



WARDROBE



DRESSING ROOM

WiFi Network: **Memorial_Hall2G**
Password: **Pilgrims1**

Note: This venue does not have laundry facilities

LOCAL SERVICES

RESTAURANTS

Dillon's Local (next door)

21 South Park Ave, Plymouth, MA 02360
(774) 404-7913
www.DillonsLocalPlymouth.com

Anna's Harborside Grille (0.2 mi)

145 Water Street, Plymouth, MA 02360
(508) 591-7372
www.AnnasHarborsideGrille.com

Lobster Hut (0.2 mi)

25 Town Wharf, Plymouth, MA 02360
(508) 746-2270
www.LobsterHutPlymouth.com

Martini's Bar & Grill (0.1 mi)

50 Court Street, Plymouth, MA 02360
(774) 773-9782
www.MartinisBarAndGrill.com

HOTELS

Hotel 1620 Plymouth Harbor (0.2 mi)

180 Water Street, Plymouth, MA 02360
(508) 747-4900
www.hotel1620.com

John Carver Inn & Spa (0.5 mi)

25 Summer Street, Plymouth, MA 02360
(855) 771-3293
www.JohnCarverInn.com

PHARMACY

CVS (6.1 mi)

517 State Road, Plymouth, MA 02360
(580) 224-3312

Rite Aid (2.1 mi)

179 Court Street, Plymouth, MA 02360
(508) 746-2227

COFFEE

Dunkin Donuts (0.7 mi)

105 Samoset Street, Plymouth, MA 02360
(508) 732-9989

Starbucks (1.1 mi)

127 Samoset Street, Plymouth, MA 02360
(508) 746-2270

Gunther Tootie's Bagel (0.2 mi)

22 Court Street, Plymouth, MA 02360
(508) 591-7126
www.GuntherTooties.com

Vela Juice Bar (500 ft)

71 Court Street, Plymouth, MA 02360
(508) 591-7718
www.VelaJuiceBar.com

MUSIC STORES

The Music Box (0.2)

27 Court Street, Plymouth, MA 02360
(580) 687-4297
www.GuitarPedalShoppe.com

BumbleBee Music Shop (0.3)

12 Middle Street, Plymouth, MA 02360
(508) 830-1766
www.BumbleBeeMusicShop.com

HARDWARE STORES

North Plymouth Ace Hardware (1.2 mi)

304 Court Street, Plymouth, MA 02360
(580) 746-0120

Aubuchan Hardware (6.1 mi)

529 State Road, Plymouth, MA 02360
(508) 224-1492