



# VENUE GUIDE

609 MAIN STREET, LACONIA, NH 03246  
COLONIALLAACONIA.COM





# CONTENTS

<b>Intro</b>	
Management	3
Primary Contacts	4
<b>Venue Overview</b>	<b>5</b>
Building Layout	6
Seating Charts	7
Parking	8
<b>Tech Package</b>	<b>9</b>
Load-In	10
Stage Specifications	12
Lighting	14
Atmospherics	14
Front of House	14
Power	16
Audio	16
<b>Hospitality</b>	<b>17</b>
Artist Spaces	18
Restaurants	19
Hotels	20
Medical Resources	21

# VENUE MANAGEMENT



## THE COLONIAL THEATRE

609 MAIN STREET, LACONIA, NH 03246

Box Office: Monday - Friday, 10am-4pm

[coloniallaconia.com](http://coloniallaconia.com)

Located in the central Lakes Region of New Hampshire, Laconia's Colonial Theatre is a beautifully restored former Vaudeville theatre that had its grand re-opening in July 2021. The theatre that has been restored to its original 1914 look and character with modern production capabilities. With 761 seats in an intimate and ornate room, the Colonial has quickly established itself as a destination for national touring artists and comedians, due to its amenities and its ideal routing location in central New England.



## SPECTACLE LIVE

57 BEDFORD STREET, SUITE 115, LEXINGTON, MA 02420

[spectaclelive.com](http://spectaclelive.com)

Spectacle Live is a full-service live entertainment booking, marketing, ticketing, promoting, producing, and venue management organization based in Lexington, MA. We specialize in the marketing and presentation of concerts, theatre, comedy, family entertainment, and festival production in venues throughout New England.

*Spectacle Live uses the ETix ticketing platform*

# PRIMARY CONTACTS

## HOSPITALITY

**Nicole Southworth, *Venue Manager***  
nsouthworth@spectaclelive.com  
(617) 531-1257 x 724

**Henry Soney, *Event Manager***  
hsoney@spectaclelive.com  
(617) 531-1257 x 712

## PRODUCTION

**Adam Taylor, *Director of Production***  
ataylor@spectaclelive.com  
(617) 531-1257 x733

## RENTAL INQUIRIES

**Kathleen Tormey, *Event Sales Manager***  
ktormey@spectaclelive.com  
(617) 531-1257 x 743

## MARKETING

**Dan Berube, *Director of Marketing***  
dberube@spectaclelive.com  
(617) 531-1257 x703

## TALENT BUYING & AGENT RELATIONS

**Andrew Holden, *Talent Buyer***  
aholden@spectaclelive.com  
(617) 531-1257 x 705

**Erik Raneo, *Talent Buyer***  
eraneo@spectaclelive.com  
(617) 531-1257 x 702

**Kayt Marcos, *Talent Buyer***  
kmarcos@spectaclelive.com  
(617) 531-1257 x 715

## BOX OFFICE & TICKETING

**Gen Shappell, *Director of Ticketing***  
gshappell@spectaclelive.com  
(617) 531-1257 x 720

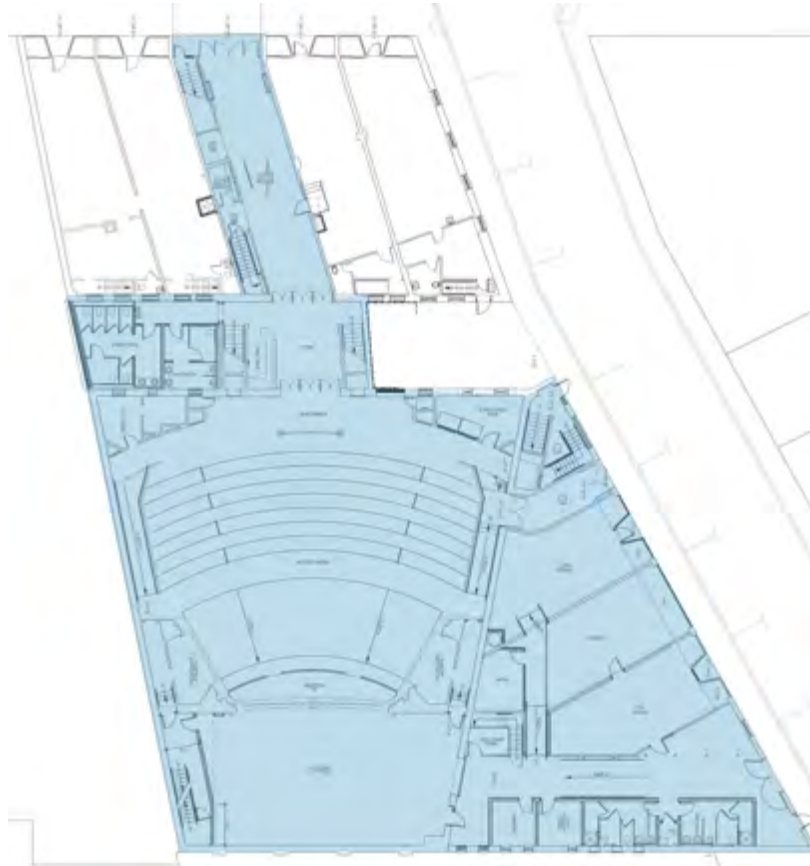
A photograph of a theater interior, viewed from the audience's perspective. The stage is at the top, featuring a large blue curtain and a smaller blue curtain above it. The stage is flanked by red curtains. In the foreground, rows of yellow seats are visible. A large, ornate chandelier hangs from the ceiling. The text "VENUE OVERVIEW" is overlaid in the center of the image.

# !

# VENUE OVERVIEW

Building Layout | Seating Charts | Parking

# BUILDING LAYOUT



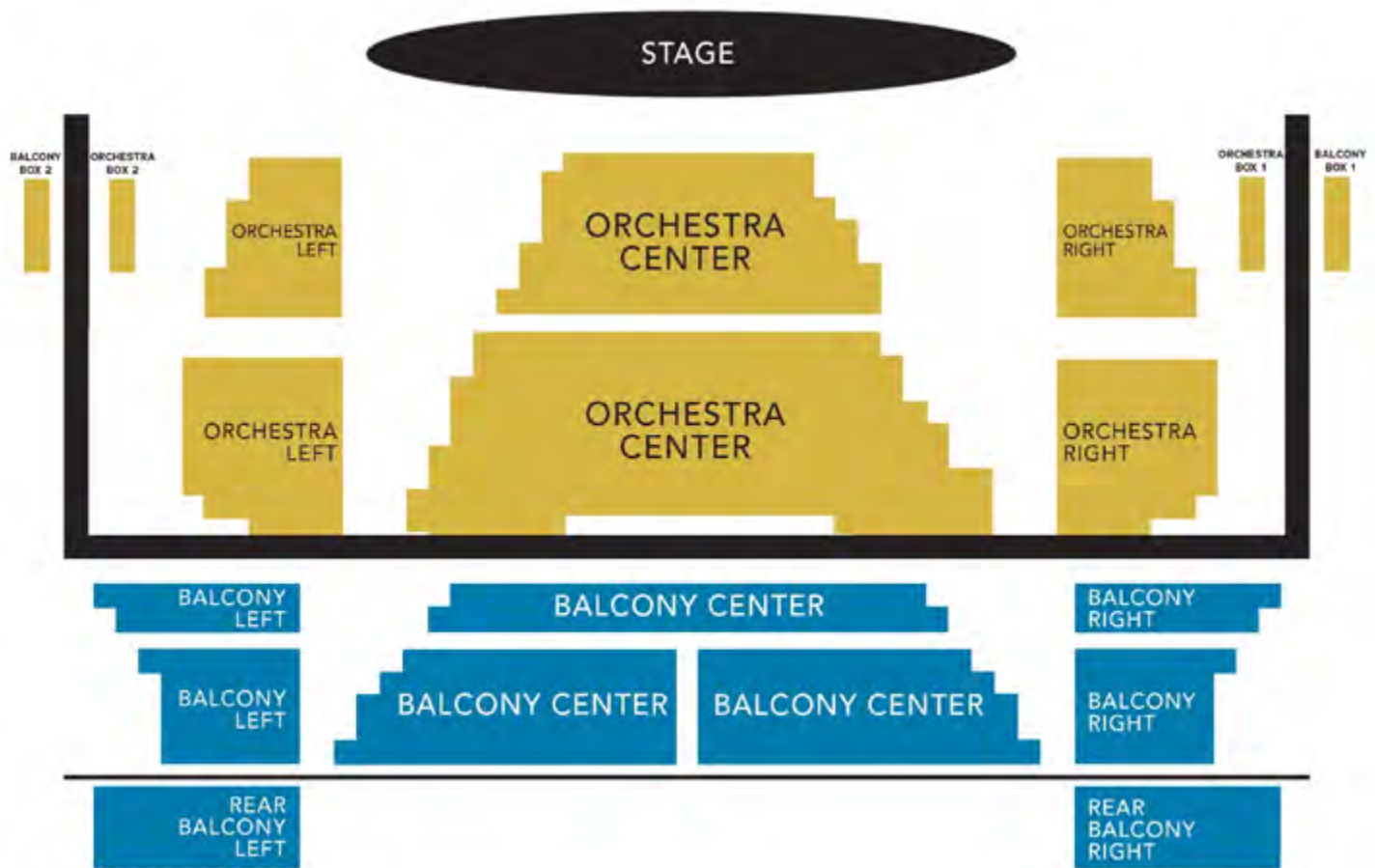
FLOOR PLAN



## MERCH

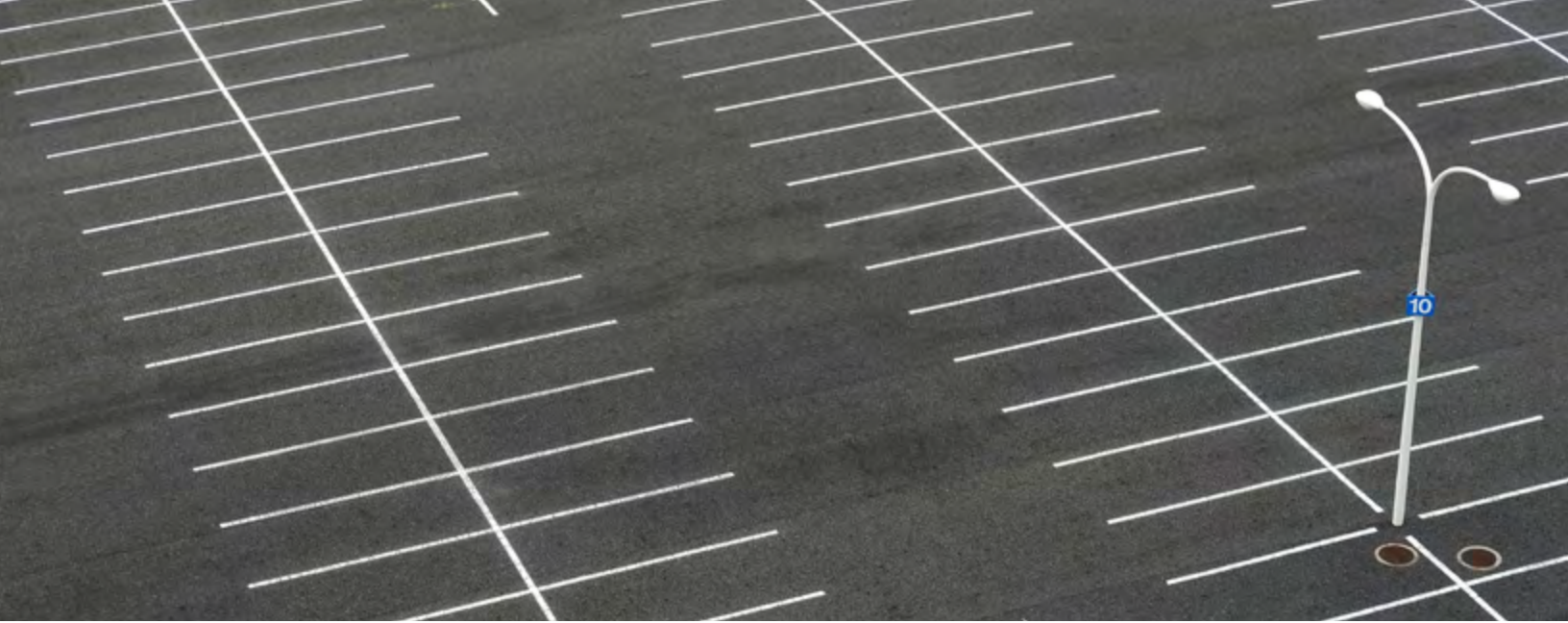
The merch alcove is located inside the main entrance of the theatre. Two, narrow, 6' x 18" tables are provided. One table placed inside the alcove along the wall, and one placed in front of the alcove. Due to limited space and means of egress, we recommend paring down merch when possible. All merchandise must fit inside the alcove.

# SEATING CHART



**CAPACITY: 761**





# PARKING



Parking | **DOWNTOWN LACONIA**

1. City Lot
2. 50 Church St Lot
3. Beacon St E. Garage
4. Beacon St E. Angeled Parking
5. Beacon St W. Angeled Parking

Load in and Tour Bus parking available on Canal Street next to the Theatre





# || TECH PACKAGE

Stage Specs | Load-In | Lighting | Audio  
Power | Atmospherics | Sound Board



## LOAD-IN



The Colonial Theatre is located in Downtown Laconia, about 10 miles from Interstate 93. This venue allows for east parking of bus/trailer, with a ground level push that always stays on grade to the stage. Load in access on Canal St.

# LOAD-IN

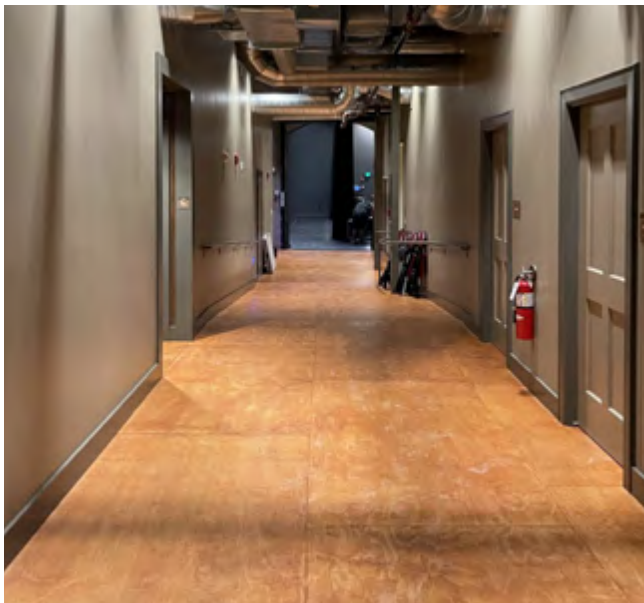


**LOAD-IN PARKING ON  
CANAL STREET**



**6" LIFT FROM SIDEWALK TO  
LOAD-IN LEVEL**

**DOOR: 8' WIDE x 12' TALL**



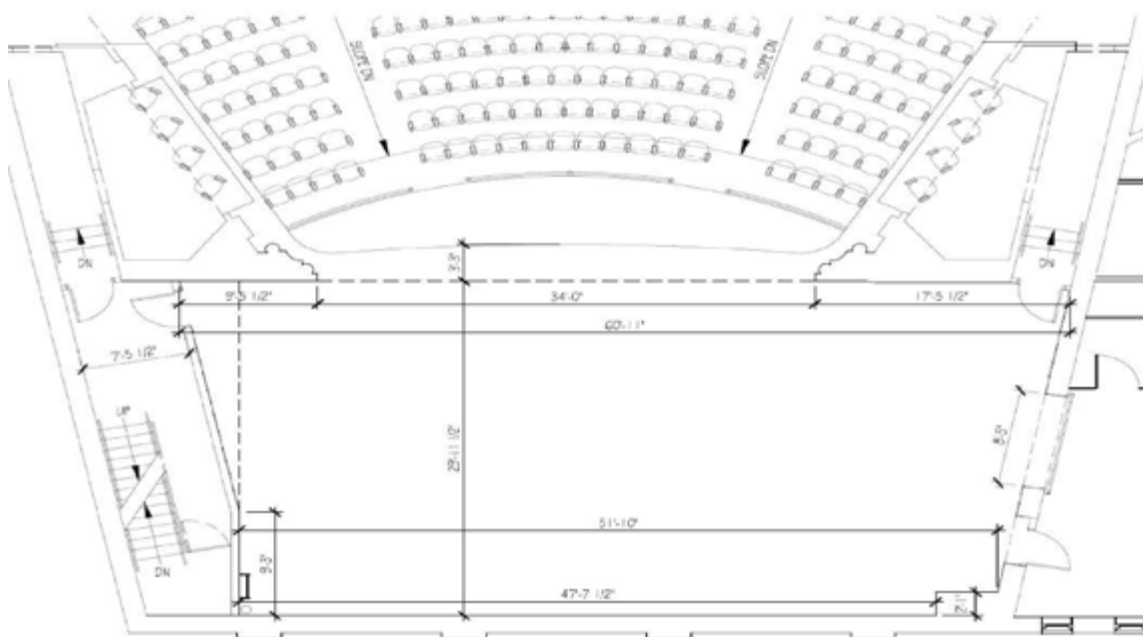
**60' PUSH DIRECTLY TO  
STAGE RIGHT**



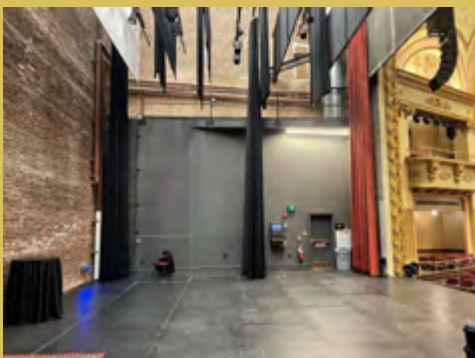
**ROLL UP AT END OF HALL  
ON STAGE RIGHT**



# STAGE SPECIFICATIONS



The stage is 34' wide at proscenium opening and x 30' deep.



STAGE LEFT



STAGE RIGHT

# STAGE



# LIGHTING

---

## HOUSE CONSOLE

- ETC Gio with two additional touch screen monitors - using SACN over Cat5 to communicate with features

## HOUSE FIXTURES

- (40) ETC ColorSource Spot | P:01 / 5ch
- (15) ETC ColorSource PAR | P:01 / 5ch
- (8) ETC Selador Lustr Desire D60 | QS Direct General / 10ch
- (15) Chauvet Rogue R2X Wash
- (22) Chauvet Rogue R3 Spot

## POSITIONS

The 5 on-stage line sets are motorized with ETC control

# ATMOSPHERICS

---

There is no in-house hazer

Haze MUST be advanced no later than 2 weeks prior to event date

# FOH AREA

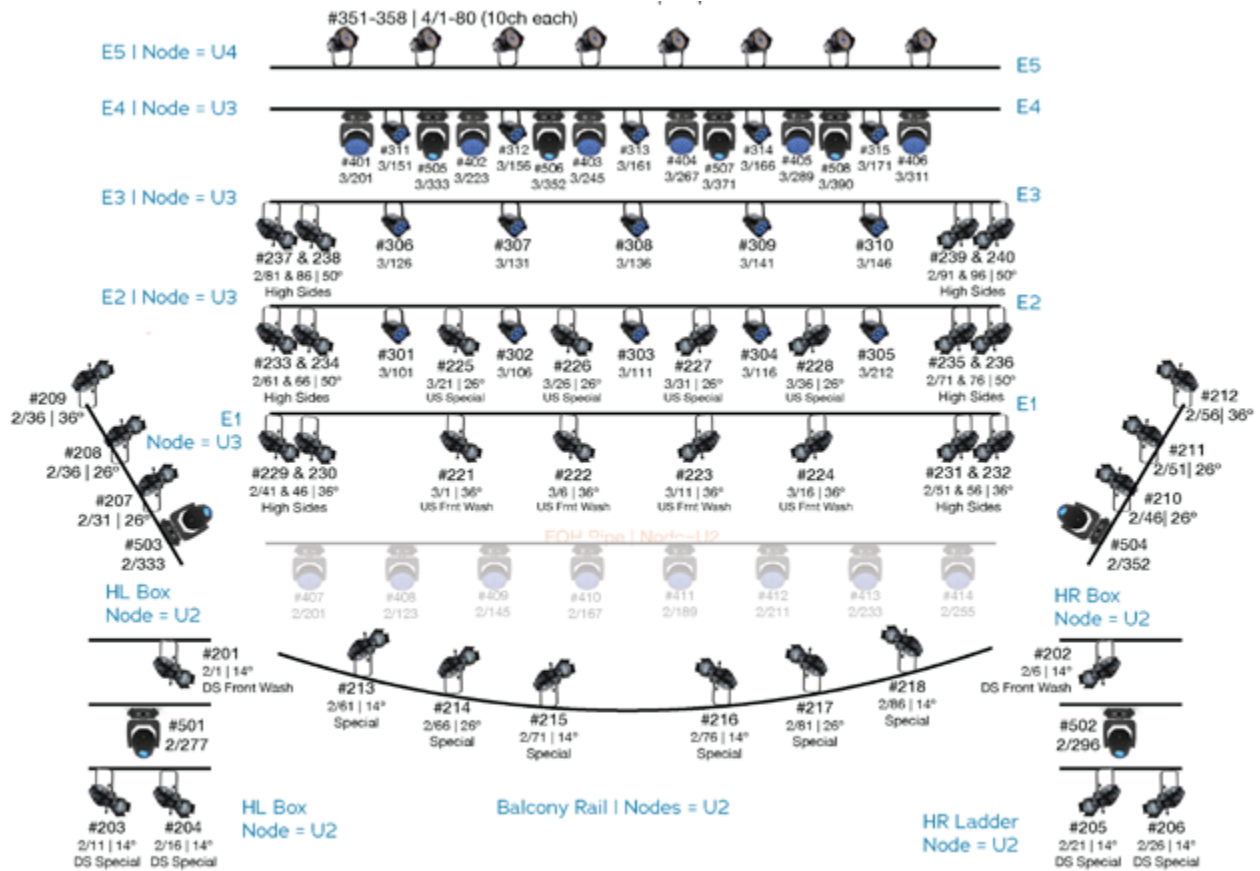
---

Shared audio/lighting space - roughly 7' deep x 15' wide  
Analog and ethernet

# SOFT GOODS

---

- Upstage black traveler
- Flyable white cyc placed just downstage of upstage black traveler
- Midstage Traveler
- Multiple flyable legs midstage



ETC ColorSource Spot | P:01 / 5ch

ETC ColorSource PAR | P:01 / 5ch

ETC Selador Lustr Desire D6o | QS Direct General / 10ch

Chauvet Rogue R2X Wash

Chauvet Rogue R3 Spot

# = Fixture Number as set in house console

x/xxx = Universe / Address

xx° = lens barrel installed, where noted

House Console = ETC Gio (running EOS software, same as Element/Ion/Eos)

Space Fixtures (hanging on border #4 pipe):

9x Chauvet Rogue R2X Wash

2x ETC ColorSource Spot 2/50° lenses

14x Chauvet Rogue r3 Beam (profile not yet available, R2 Beam is close if needed)

Note that FOH pipe is greyed out, not yet installed

# AUDIO

---

## PA SYSTEM

- (10) Nexo Geo M12 - 12 Degree
- (2) Nexo Geo M12 - 25 Degree
- (2) Nexo MSUB 15 (flown)
- (4) Nexo bumper for M10 and MSUB 15
- (2) Nexo MSUB 18 Passive Single 18" Subwoofer on caster dolly
- Nexo ID24 front fills under stage lip and in each side box

## MONITOR SYSTEM

(8) D&B Max12 with D&B amplification

## FOH/MONITORS

Yamaha TF5 (monitors mixed from FOH)

## SNAKE SYSTEMS

30 and 54 channel splitter systems available upon request  
8, 12, and 16 channel subsnakes spec'd per show

## MICROPHONES

Several in-house microphones & DI's  
Larger microphone packages brought in on a per show basis

# POWER

---

Multiple circuits of 20amp quads affixed to the walls around stage

1x - 200 amp - 3 phase Cam Lok connection USR

1x - 60 amp - 3 phase Cam Lok connection SL

1x - 60 amp - 3 phase Cam Lok connection SR



The background image shows a grand, ornate theater interior. The ceiling is high and features intricate gold and blue decorative patterns. A large, black, multi-tiered speaker hangs from the ceiling. The walls are covered in gold leaf and detailed carvings. In the foreground, there are several posters and a display case. One poster on the left has the text 'famous for his... ay objects such as' and '1907'. Another poster in the center shows a portrait of a man. A display case in the foreground contains various items, including what looks like a small sculpture or model.

# III HOSPITALITY

Artist Spaces | Restaurants & Coffee Shops | Hotels  
Medical Resources | Music Stores | Hardware Stores

# ARTIST SPACE



The Colonial Theatre is equipped with a large communal Green-room and Lounge area that also serves as a large catering room. This area connects to a hallway which leads directly to stage access. There are two (multi-stall) backstage restrooms, each equipped with a shower.

Additionally, there is a small quick change room off stage right.

# RESTAURANTS

## **DEFIANT RECORDS & CRAFT BEER**

609 Main St. | Units 1 & 2  
Laconia, NH 03246

defiantnh.com

---

## **WAYFARER COFFEE ROASTERS**

626 Main St.  
Laconia, NH 03246

wayfarerroasters.com  
603.527.8313

---

## **KOUNG SUSHI MART**

20 Canal St.  
Laconia, NH 03246

603.932.0876

---

## **TRILLIUM FARM TO TABLE**

62 Canal St.  
Laconia, NH 03246

trilliumnh.com  
603.527.8281

---

## **BURRITO ME**

9 Veterans Sqr.  
Laconia, NH 03246

burritome.com  
603.556.7798

---

## **LACONIA LOCAL EATERY**

21 Veterans Sqr.  
Laconia, NH 03246

laconialocaleatery.com  
603.527.8007

---

## **WATER STREET CAFE**

62 Canal St.  
Laconia, NH 03246

waterstreetcafenh.com  
603.524.4144

---

## **HECTORS FINE FOOD & SPIRITS**

53 Beacon St. W  
Laconia, NH 03246

hectorsnh.com  
603.524.1009

---

## **GOOD NATURED JUICE & SMOOTHIE**

569 Main St.  
Laconia, NH 03246

goodnaturednh.com

---

# HOTELS

HOTEL PARTNER



## **TOWNEPLACE SUITES LACONIA GILFORD**

14 Sawmill Rd,  
Gilford, NH 03249  
(603) 524-5533

[marriot.com](http://marriot.com)



## **BEST WESTERN PLUS LANDMARK INN**

480 Main St.  
Laconia, NH 03246  
(603) 524-8000

[bestwestern.com](http://bestwestern.com)

\*Discounted rates available when booking directly with our hotel partners.

## **STEELE HILL RESORT** *PATH VACATIONS DESTINATION*

516 Steele Hill Rd.  
Sanbornton, NH 03069  
(800) 661-2243

[pathvacations.com](http://pathvacations.com)

## **THE MARGATE RESORT**

76 Lake St.  
Laconia, NH 03246  
(603) 627-4283

[themargate.com](http://themargate.com)

## **TOWNEPLACE SUITES**

14 Sawmill Rd.  
Gilford, NH 03249  
(603) 524-5533

[marriot.com](http://marriot.com)

# MEDICAL RESOURCES

HEALTHCARE PARTNER



## **CONCORD HOSPITAL**

80 Highland St.  
Laconia, NH 03246  
(603) 524-3211

## **CLEAR CHOICE MD URGENT CARE**

96 Daniel Webster Hwy.  
Belmont, NH 03220  
(603) 267-0656  
[ccmdcenters.com](http://ccmdcenters.com)

## **WALGREENS PHARMACY**

45 Court St.  
Laconia, NH 03246  
(603) 524-5550  
[walmart.com](http://walmart.com)

## **GENOA HEALTHCARE**

40 Beacon St. E Suite #103  
Laconia, NH 03246  
(603) 556-8477  
[genoahealthcare.com](http://genoahealthcare.com)