



VENUE GUIDE

201 MAIN STREET, NASHUA, NH 03060
NASHUACENTERFORTHEARTS.COM





CONTENTS

Intro	1
Management	1
Primary Contacts	2
Venue Overview	3
Building Layout	4
Seating Charts	6
Parking	8
Map & Routing	9
Tech Package	10
Stage Specifications	11
Load-In	12
Lighting	13
Audio	14
Atmospherics	15
Power	15
Sound Board	15
Hospitality	16
Artist Spaces	17
Restaurants & Coffee Shops	19
Hotels	20
Medical Resources	21
Hardware Stores	22
Music Stores	22

VENUE MANAGEMENT



NASHUA CENTER FOR THE ARTS

201 MAIN STREET, NASHUA, NH 03060

Box Office: Monday – Friday, 10am–4pm
nashuacenterforthearts.com

Opened in April of 2023, the Nashua Center for the Arts is New Hampshire's newest live entertainment venue. Located in the heart of downtown Nashua, the NCA has a modern design and offers an intimate audience experience. The NCA has a seated capacity of 750, and a standing general admission capacity of up to 1,000 people.



SPECTACLE LIVE

57 BEDFORD STREET, SUITE 115, LEXINGTON, MA 02420

spectaclelive.com

Spectacle Live is a full-service live entertainment booking, marketing, ticketing, promoting, producing, and venue management organization based in Lexington, MA. We specialize in the marketing and presentation of concerts, theatre, comedy, family entertainment, and festival production in venues throughout New England. Nashua Center for the Arts is Spectacle Live's newest managed venue.

Spectacle Live uses the ETix ticketing platform

PRIMARY CONTACTS

RENTAL INQUIRIES

Kathleen Tormey, *Event Sales Manager*
ktormey@spectaclelive.com
(617) 531-1257 x 743

HOSPITALITY

Cianan Heaney, *Event Manager*
cheaney@spectaclelive.com
(617) 531-1257 x 739

Henry Soney, *Event Manager*
hsoney@spectaclelive.com
(617) 531-1257 x 712

PRODUCTION

Adam Taylor, *Director of Production*
ataylor@spectaclelive.com
(617) 531-1257 x 733

MARKETING

Dan Berube, *Director of Marketing*
dberube@spectaclelive.com
(617) 531-1257 x 703

TALENT BUYING & AGENT RELATIONS

Andrew Holden, *Talent Buyer*
aholden@spectaclelive.com
(617) 531-1257 x 705

Erik Raneo, *Talent Buyer*
eraneo@spectaclelive.com
(617) 531-1257 x 702

Kayt Marcos, *Talent Buyer*
eraneo@spectaclelive.com
(617) 531-1257 x 715

BOX OFFICE & TICKETING

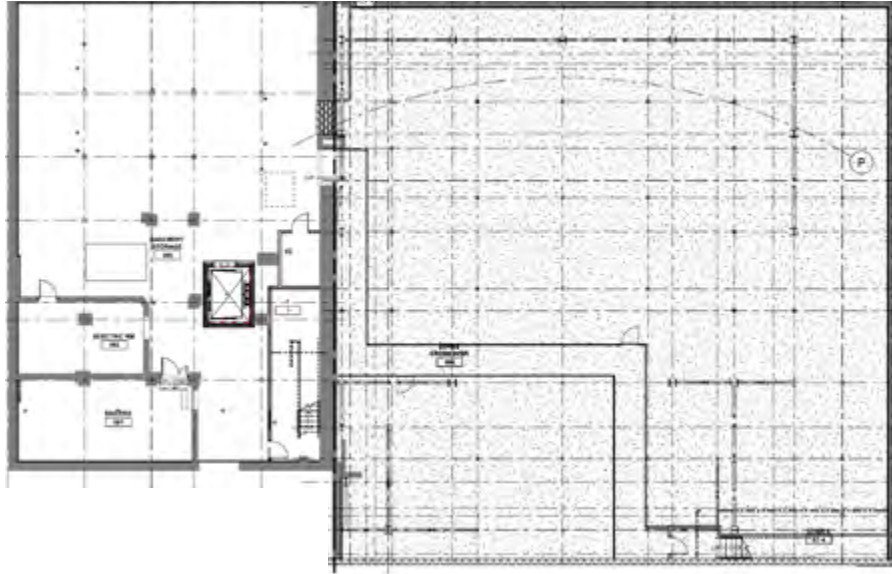
Gen Shappell, *Director of Ticketing*
gshappell@spectaclelive.com
(617) 631-1257 x 720

The background image is a low-angle, dusk-time photograph of the Nashville Center for the Arts building. The building's facade is composed of large, dark panels, and the name "NASHVILLE CENTER FOR THE ARTS" is visible in large, light-colored, three-dimensional letters. A balcony with a glass railing is visible on the upper level. The sky is a deep twilight blue.

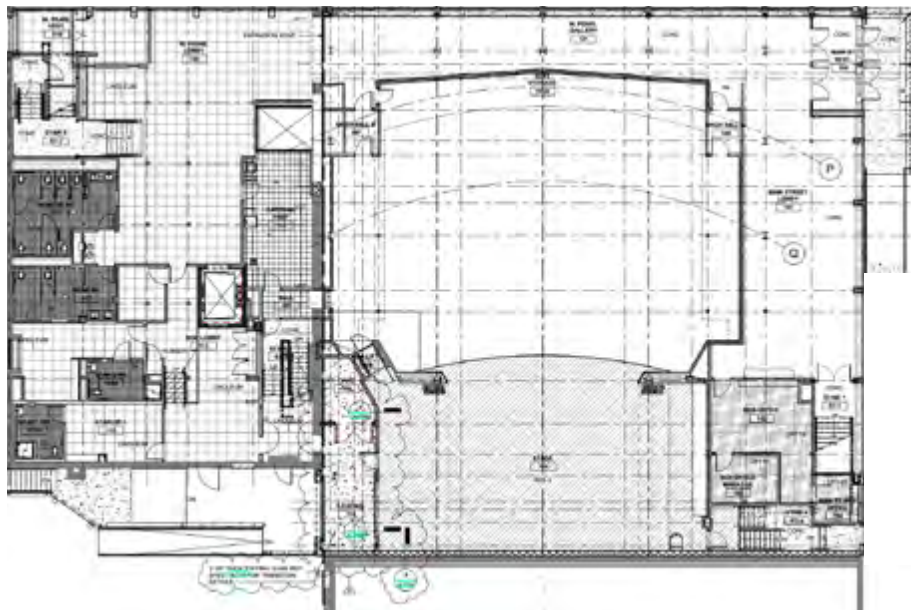
I VENUE OVERVIEW

Building Layout | Seating Charts | Parking | Map & Routing

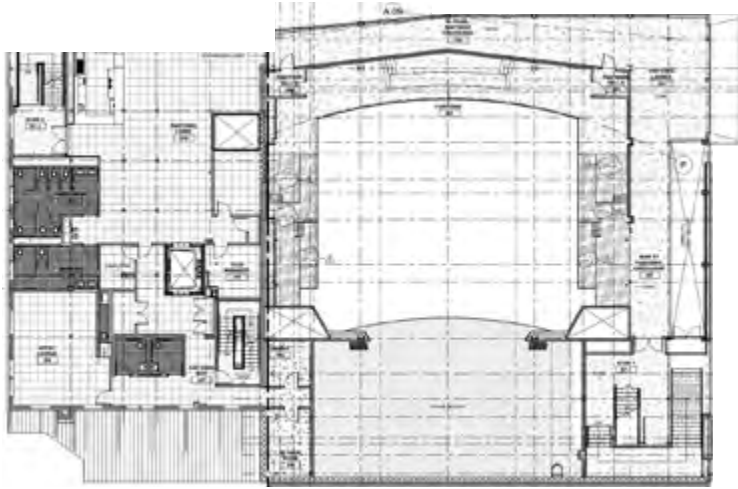
BUILDING LAYOUT



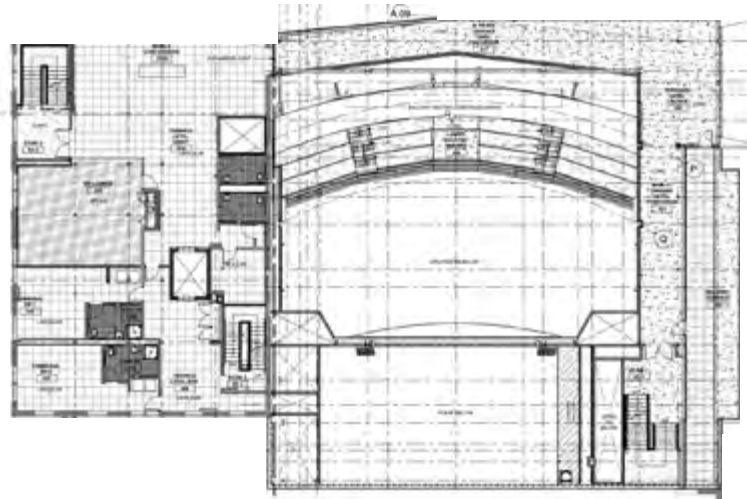
Basement Floor Plan



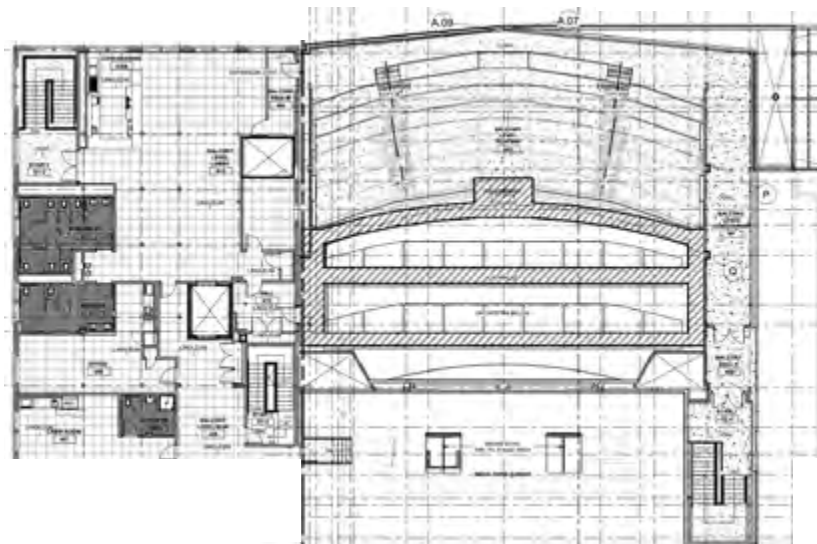
First Floor Plan | ORCHESTRA LEVEL



Second Floor Plan | **PARTERRE LEVEL**



Third Floor Plan | **TERRACE LEVEL**



Fourth Floor Plan | **BALCONY LEVEL**



SEATING CHART VARIATIONS



Capacity: 750 | STANDARD SEATING



Floor Capacity: 160 ▪ Balcony Seating: 296 | **CABARET STYLE SEATING**



Floor Capacity: 640 ▪ Balcony Seating: 296 | **GENERAL ADMISSION**



PARKING



Parking | DOWNTOWN NASHUA

ZONE 1: 90 MINUTE LIMIT
MONDAY - SATURDAY
 9AM - 7PM
 \$1.00/HOUR

ZONE 2: 2 HOUR LIMIT
MONDAY - FRIDAY
 9AM - 7PM
 \$0.75/HOUR

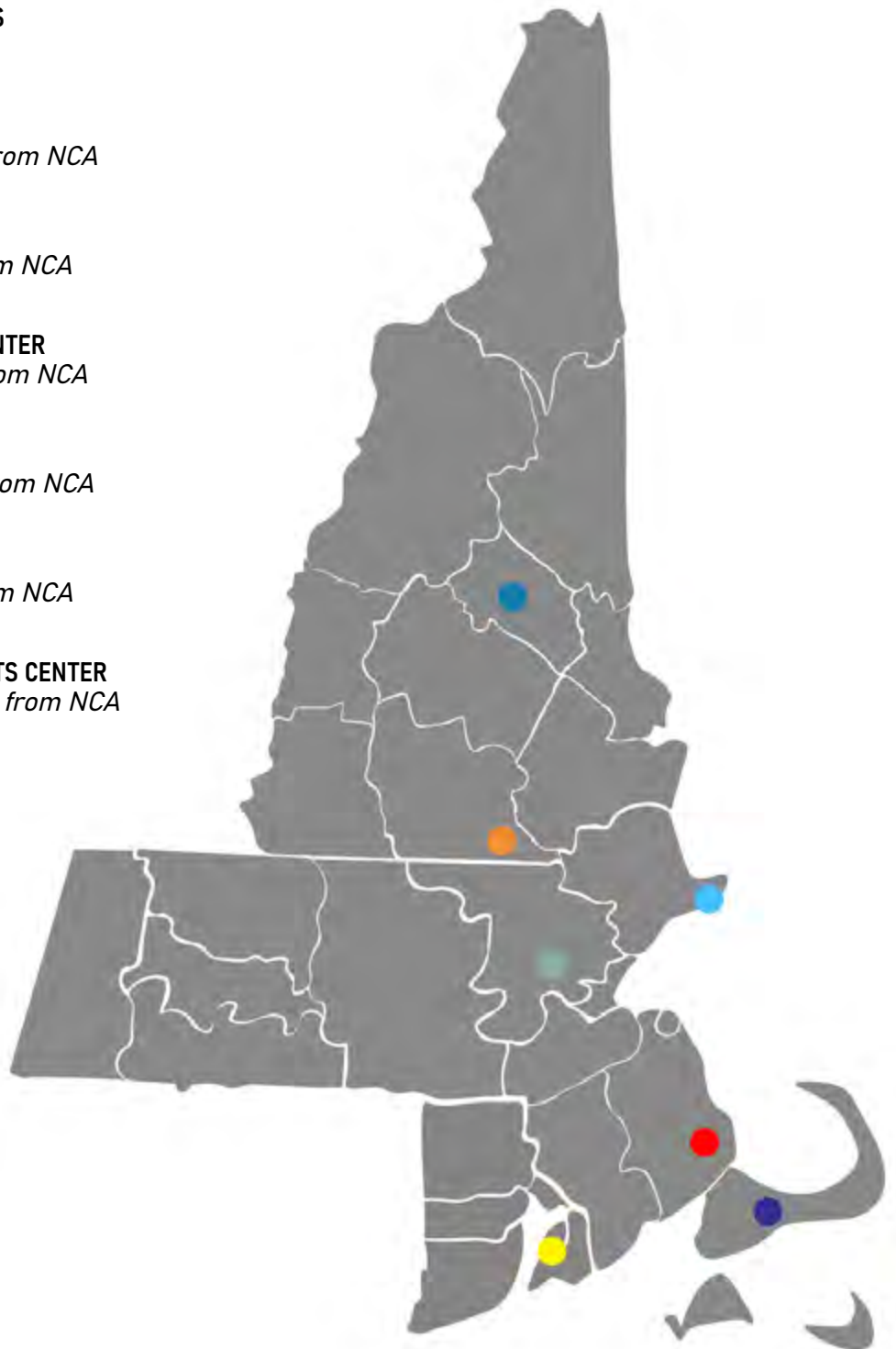
ZONE 3: NO LIMIT
MONDAY - FRIDAY
 9AM - 6PM
 \$0.50/HOUR

Nashua Center for the Arts is conveniently located off Route 3 in Downtown Nashua. With easy load in & out, ample parking close by, and lots of food & beverage options around, this is a great location for both patrons and performers. See P.19 for a full list of local services and businesses.

MAP & ROUTING

This venue conveniently routes with other Northeast buildings.
For routing partners, please contact Andrew Holden or Erik Raneø.

- NASHUA CENTER FOR THE ARTS**
Nashua, NH
Capacity: 750
- CARY MEMORIAL HALL**
Lexington, MA - *30 miles from NCA*
Capacity: 820
- COLONIAL THEATRE**
Laconia, NH - *60 miles from NCA*
Capacity: 750
- SHALIN LIU PERFORMANCE CENTER**
Rockport, MA - *65 miles from NCA*
Capacity: 330
- PLYMOUTH MEMORIAL HALL**
Plymouth, MA - *85 miles from NCA*
Capacity: 1350
- JPT FILM + EVENT CENTER**
Newport, RI - *115 miles from NCA*
Capacity: 472
- BARNSTABLE PERFORMING ARTS CENTER**
Barnstable, MA - *120 miles from NCA*
Capacity: 1200



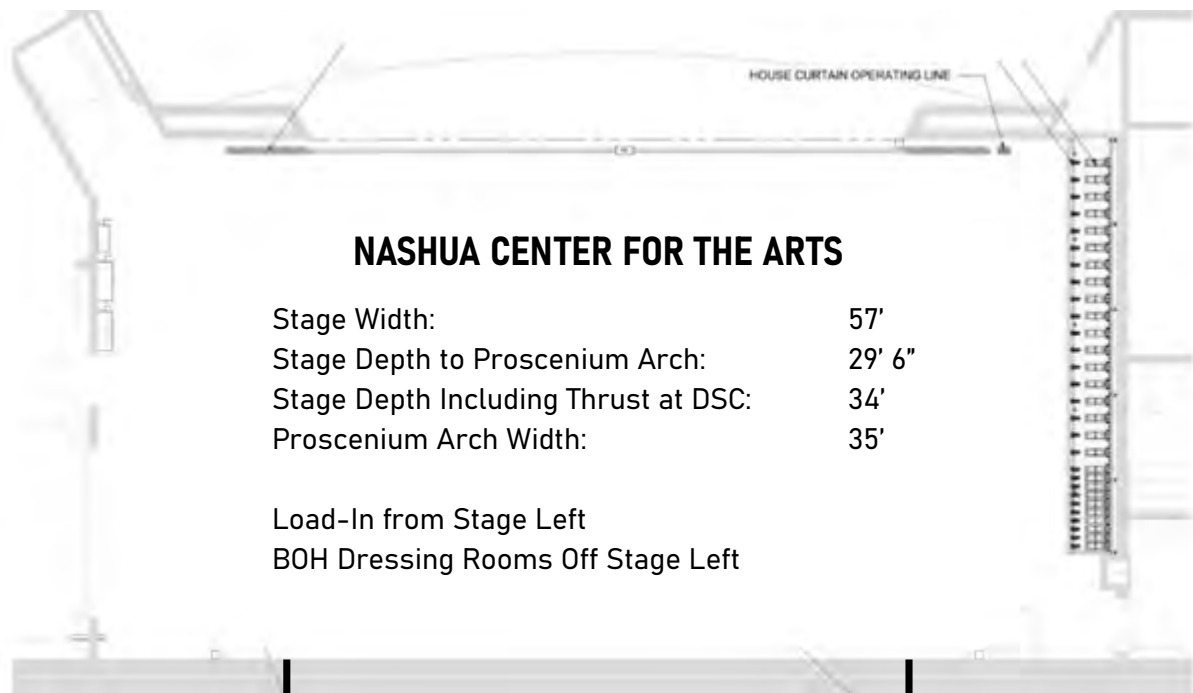


II **TECH PACKAGE**

Stage Specs | Load-In | Lighting | Audio
Power | Atmospherics | Sound Board



STAGE SPECIFICATIONS

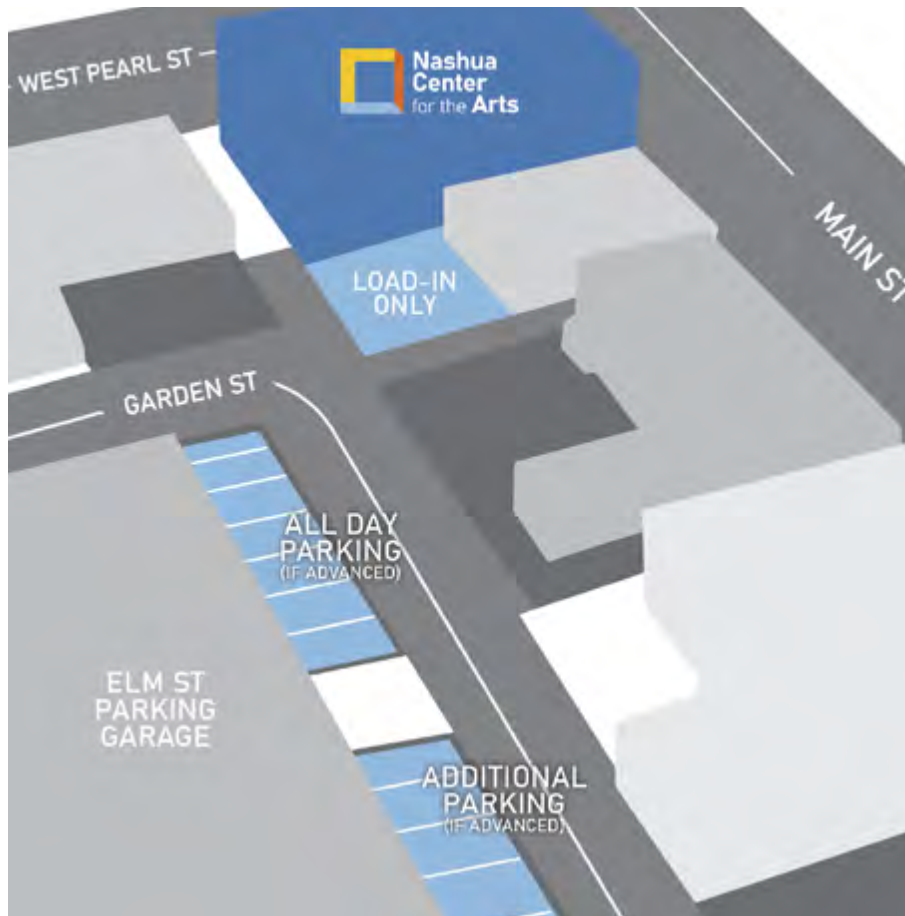


STAGE LEFT



STAGE RIGHT

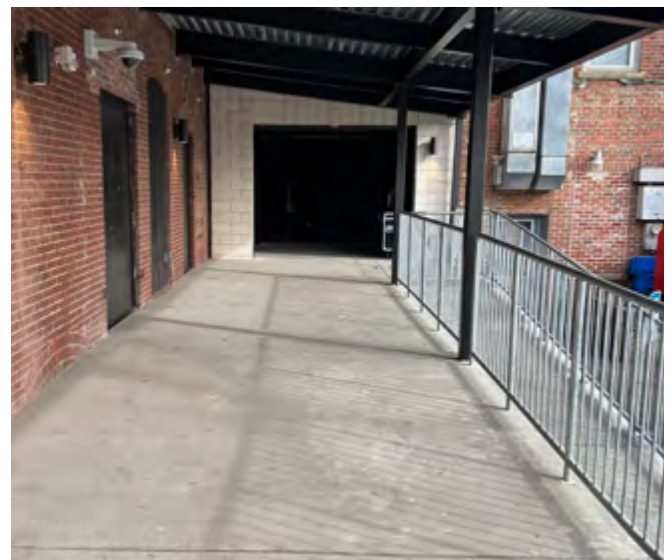
LOAD-IN



Parking and load in take place behind the venue. The best address for GPS is:

***14 Garden Street
Nashua, NH 03060***

There is roughly a 50' push from the dock to the stage. The roll up door is 10' wide x 8' tall, and a 4' wide dock plate is available



LOAD-IN DOCK



LIGHTING

HOUSE CONSOLE

- **GrandMA 3 Lite**

HOUSE FIXTURES (FOH)

- 24 **ETC Colorsource** | *Front Light*
- 4 **Ayrton Euris-S** | *Backlight - Spot/Beam*
- 2 **Robert Julian Oz** | *Followspot*

HOUSE FIXTURES (STAGE)

- 12 **Ayrton Euris-S** | *Backlight - Spot/Beam*
- 4 **Chauvet Strike Array 4** | *Blinders*
- 5 **ETC Colorsource CYC** | *Cyc Light*
- 24 **Rogue R2X Wash** | *Backlight - Wash*

RIGGING

- Stage rigging is comprised of a counterweight system with 28 line sets. Each line set is 40' wide with 22'6" of travel for a total trim height of 27'. 735 lbs total per batten.
- 2 Spot positions accessed via catwalks above audience chamber
- Additional moving fixtures, consoles, truss, and ground support available on request (subject to contract) during the show advance with Adam Taylor.

AUDIO

PA SYSTEM

- 24 **Meyer Lina** | *12 Per Side*
- 6 **Meyer 900-LFC Subs** | *Hung Center Cluster*
- 7 **Meyer UP-4 Slim** | *FF*
- 3 **Meyer Ultra-X20** | *Under Balcony*
- 3 **Ultra-X40** | *Upper Balcony*
- 2 **Meyer Galileo Galaxy 816** | *Processing*

MONITOR SYSTEM

- 8 **EAW MicroWedge 12 (bi-amed)** | *Stage Monitors*
- 6 **Crown XTi 4000** | *Monitor Amplifiers (6 mixes)*

FOH / MONITOR CONSOLE

- **Yamaha CL3 with Rio stage racks** | *Monitors from FOH*

AUDIO INTERCONNECT SYSTEMS

- **Dante & Cat6 connections** | *Throughout Venue*
- **54 Channel Whirlwind W4 Disconnect** | *Ran Between Stage / FOH*
(5' and 20' fanout included)

MICROPHONES

- **Standard Shure & Sennheiser** Microphone Package
- **Whirlwind, Countryman, & Radial DI** (mix of passive and active)

AUDIO MISC.

- **K&M Microphone Stands** (mix of tall, medium, and short booms)
- 25 **10' Whirlwind XLR**
- 25 **25' Whirlwind XLR**
- 15 **50' Whirlwind XLR**

POWER

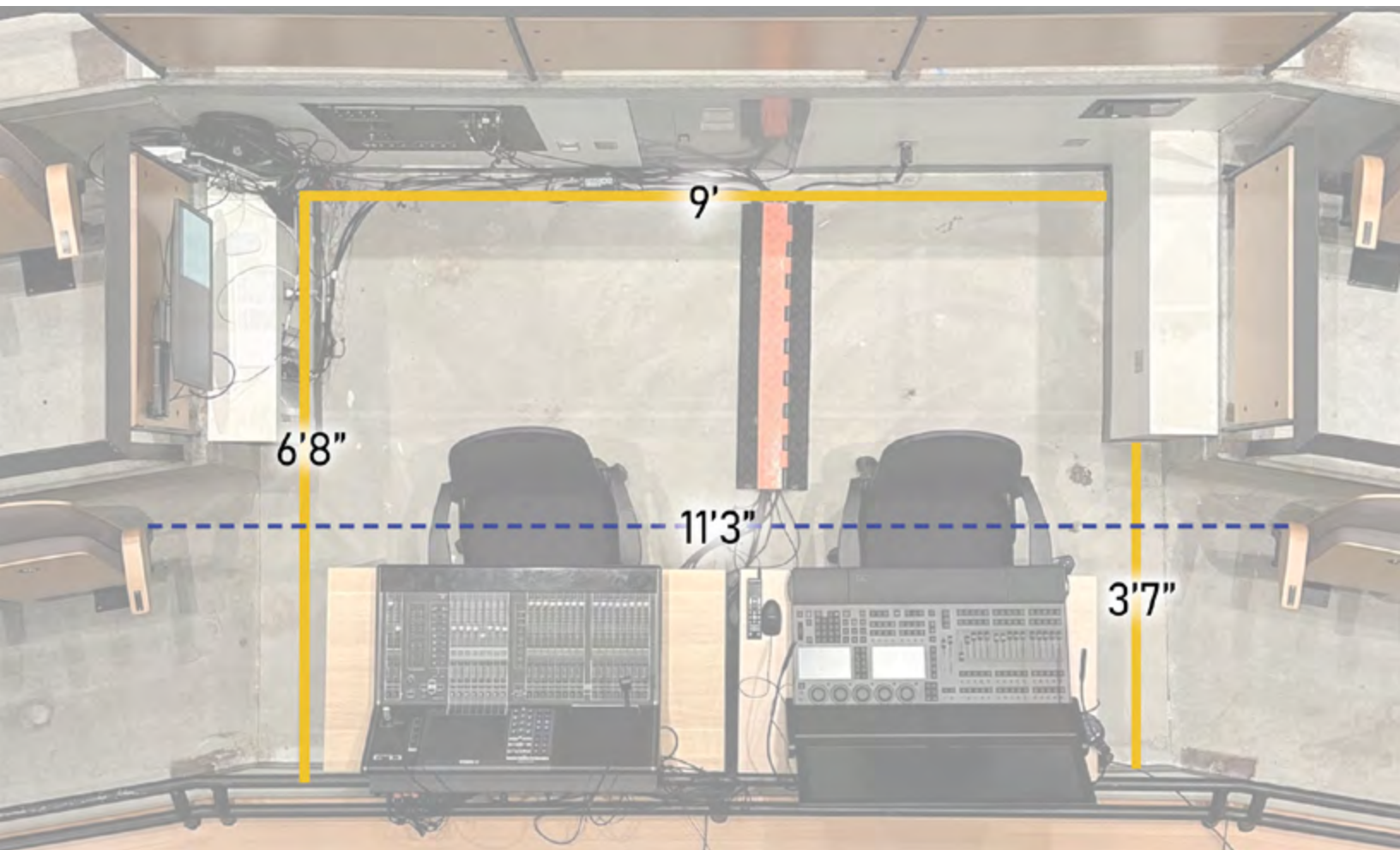
- 1 100 Amp 3 Phase Disconnect | *Loading Dock*
- 2 400 Amp 3 Phase Disconnect | *Stage Left*
- 1 200 Amp 3 Phase Disconnect | *Stage Left*
- 1 100 Amp 3 Phase Disconnect | *Stage Right*
- 1 100 Amp 3 Phase Disconnect | *FOH Catwalk*
- 1 100 Amp 3 Phase Disconnect | *Behind Retractable Seating*

ATMOSPHERICS

- Haze available upon advance and subject to show expense depending on contract

SOUND BOARD

- The Nashua Center for the Arts sound board is located in the front of Balcony Center in rows R and S. Dimensions are included below.





III HOSPITALITY

Artist Spaces | Restaurants & Coffee Shops | Hotels
Medical Resources | Music Stores | Hardware Stores

ARTIST SPACES

STAGE LEVEL

- **Star Dressing Room 1** | *Private Bathroom with Shower*
- **Star Dressing Room 2** | *Private Bathroom with Shower*
- **Production Office** | *Table and 2 Chairs*



SECOND FLOOR

- **Artist Lounge** | *Couches, TV, Kitchenette, and 2 Bathrooms*



THIRD FLOOR

- **Communal Dressing Room 1** | *Seating for 12, Private Bathroom with Shower, Washer & Dryer*
- **Communal Dressing Room 2** | *Seating for 15, Private Bathroom with Shower,*



RESTAURANTS & COFFEE SHOPS

RESTAURANT PARTNERS

MARGARITAS MEXICAN RESTAURANT

1 Nashua Dr,
Nashua, NH 03064
(603) 883-0996

THE PEDDLER'S DAUGHTER

48 Main St,
Nashua, NH 03064
(603) 821-7535

MARTHA'S EXCHANGE RESTAURANT & BREWERY

185 Main St
Nashua, NH 03060
(603) 883-0996

RAMBLING HOUSE FOOD & GATHERING

57 Facetory St, Suite A
Nashua, NH 03060
(603) 883-8781

SURF SEAFOOD

207 Main St,
Nashua, NH 03060
(603) 595-9293

RIVERWALK NASHUA

35 Railroad Sqr,
Nashua, NH 03060
(603) 769-1873

MIKE'S ITALIAN KITCHEN

212 Main St,
Nashua, NH 03060
(603) 595-9334

JAJABELLE'S PASTRY & COFFEE SHOP

143 Main St,
Nashua, NH 03060
(603) 769-1873

EMPANELLE'S

83 W Pearl St,
Nashua, NH 03060
(603) 417-7875

STELLA BLU

70 E Pearl St,
Nashua, NH 03060
(603) 318-3220

COFFEE & KINDNESS

105 W Pearl St,
Nashua, NH 03060
(833) 221-1822

HOTELS

HOTEL PARTNERS



SHERATON NASHUA

11 Tara Blvd,
Nashua, NH 03062
(603) 888-9970

[Book Now](#)



CLARION INN

10 St Laurent St
Nashua, NH 03064
(603) 888-7700

[Book Now](#)



HOMEWOOD SUITES

15 Tara Blvd,
Nashua, NH 03062
(603) 546-7470

[Book Now](#)



DOUBLE TREE BY HILTON

2 Somerset Pkwy,
Nashua, NH 03063
(603) 886-1200

[Book Now](#)

*Discounted rates available when booking directly with our hotel partners.

MEDICAL RESOURCES

HEALTHCARE PARTNERS



SOUTHERN NEW HAMPSHIRE MEDICAL CENTER

17 Prospect St,
Nashua, NH 03060
(603) 577-2800



SAINT JOSEPH'S HOSPITAL

172 Kinsley St,
Nashua, NH 03060
(603) 882-3000

WALGREENS PHARMACY

283 Main St,
Nashua, NH 03060
(603) 889-6124

CVS PHARMACY

242 Main St,
Nashua, NH 03060
(603) 886-1786

MUSIC STORES

DARRELL'S MUSIC HALL & PIANO GALLERY

Authorized Yamaha Piano Dealer

75 Main St,
Nashua, NH 03060
(603) 886-1748

GUITAR CENTER

258 Daniel Webster Highway
Nashua, NH 03060
(603) 891-5777

HARDWARE STORES

NASHUA ACE HARDWARE

129 W Pearl St,
Nashua, NH 03060
(603) 882-9491

BELLETTES OF NASHUA

80 Northeastern Blvd,
Nashua, NH 03060
(603) 891-5777